

TDP43 Rabbit mAb (AR1110)

Key Features

Host Species:	Rabbit
Reactivity:	Human,Mouse,Rat
Applications:	WB,IHC,IF,IP,ELISA
Isotype:	IgG,Kappa
MW:	45kD (Calculated) 45kD (Observed)

Recommended Dilution Ratios

IHC:	1:200-1000
WB:	1:1000-5000
IF:	1:200-1000
ELISA:	1:5000-20000
IP:	1:50-200

Storage -15°C to -25°C/1 year (Do not lower than -25°C)

Basic Information

Clonality Monoclonal

Immunogen Information

Specificity Endogenous

Target Information

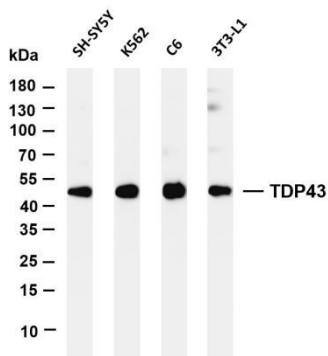
Gene name TARDBP TDP43
Protein Name TAR DNA-binding protein 43 (TDP-43)

Organism	Gene ID	UniProt ID
Human	23435	Q13148
Mouse		Q921F2

Cellular Localization Nucleus

Tissue specificity Ubiquitously expressed. In particular, expression is high in pancreas, placenta, lung, genital tract and spleen.

Validation Data



Various whole cell lysates were separated by 4-20% SDS-PAGE, and the membrane was blotted with anti-TDP43 antibody. The HRP conjugated Goat anti-Rabbit IgG(H + L) antibody was used to detect the antibody.

Lane 1: SH-SY5Y

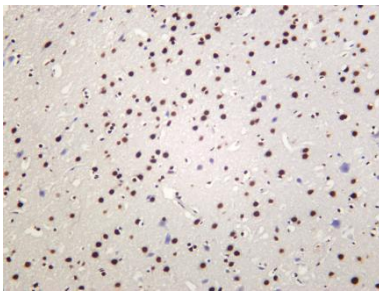
Lane 2: K562

Lane 3: C6

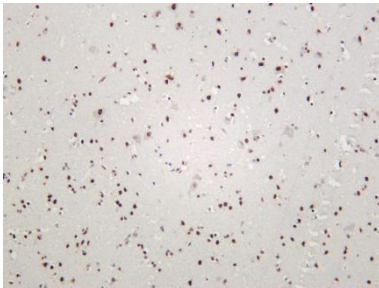
Lane 4: 3T3-L1

Predicted band size: 45kDa

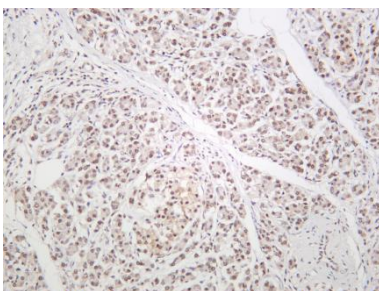
Observed band size: 45kDa



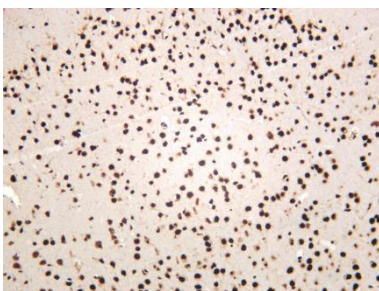
Rat brain was stained with anti-TDP43 rabbit antibody



Human brain was stained with anti-TDP43 rabbit antibody



Human pancreas was stained with anti-TDP43 rabbit antibody



Mouse brain was stained with anti-TDP43 rabbit antibody