

TOMM20 (PT0287R) PT® Rabbit mAb

Catalog No :	AR1100
Reactivity :	Human;Mouse;Rat;
Applications :	WB;IHC;IF;IP;ELISA
Target :	Tom20
Gene Name :	TOMM20
Protein Name :	Mitochondrial import receptor subunit TOM20 homolog
Human Gene Id :	9804
Human Swiss Prot No :	Q15388
Mouse Gene Id :	67952
Mouse Swiss Prot No :	Q9DCC8
Rat Gene Id :	266601
Rat Swiss Prot No :	Q62760
Specificity :	endogenous
Formulation :	PBS, 50% glycerol, 0.05% Proclin 300, 0.05%BSA
Source :	Monoclonal, rabbit, IgG, Kappa
Dilution :	IHC 1:100-1:500,WB 1:1000-1:5000,IF 1:200-1:1000,ELISA 1:5000-1:20000,IP 1:50-1:200,
Purification :	Protein A
Storage Stability :	-15°C to -25°C/1 year(Do not lower than -25°C)

Molecularweight : 16kD

Observed Band : 16kD

Background :

function:Central component of the receptor complex responsible for the recognition and translocation of cytosolically synthesized mitochondrial preproteins. Together with tom22 functions as the transit peptide receptor at the surface of the mitochondrion outer membrane and facilitates the movement of preproteins into the tom40 translocation pore.,similarity:Belongs to the Tom20 family.,subunit:Forms part of the preprotein translocase complex of the outer mitochondrial membrane (TOM complex) which consists of at least 7 different proteins (TOMM5, TOMM6, TOMM7, TOMM20, TOMM22, TOMM40 and TOMM70). Interacts with TOM22.,

Function :

function:Central component of the receptor complex responsible for the recognition and translocation of cytosolically synthesized mitochondrial preproteins. Together with tom22 functions as the transit peptide receptor at the surface of the mitochondrion outer membrane and facilitates the movement of preproteins into the tom40 translocation pore.,similarity:Belongs to the Tom20 family.,subunit:Forms part of the preprotein translocase complex of the outer mitochondrial membrane (TOM complex) which consists of at least 7 different proteins (TOMM5, TOMM6, TOMM7, TOMM20, TOMM22, TOMM40 and TOMM70). Interacts with TOM22.,

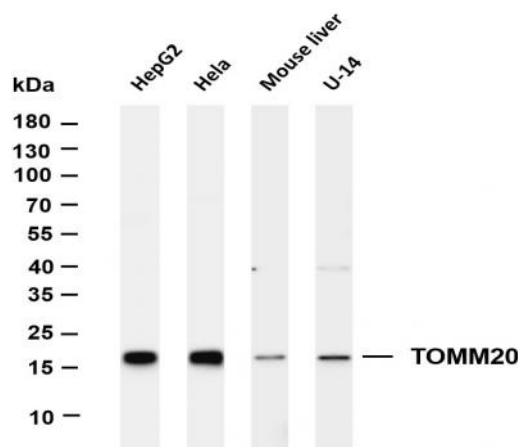
Subcellular Location :

Membranous

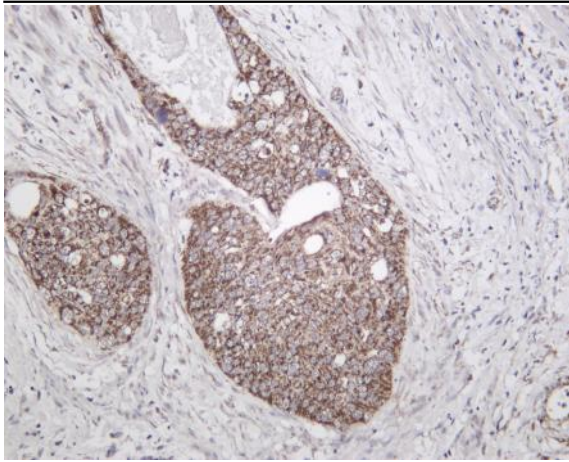
Expression :

Bone marrow,Brain,Cervix,Epithelium,Eye,Fibroblast,Pancreas

Products Images



Various whole cell lysates were separated by 4-20% SDS-PAGE, and the membrane was blotted with anti-TOMM20 (PT0287R) antibody. The HRP-conjugated Goat anti-Rabbit IgG(H + L) antibody was used to detect the antibody. Lane 1: HepG2 Lane 2: HeLa Lane 3: Mouse liver Lane 4: U-14 Predicted band size: 16kDa Observed band size: 16kDa



Human cervical carcinoma was stained with Anti-TOMM20 (PT0287R) rabbit antibody