

Cytokeratin 5 Rabbit mAb (AR1115)

Key Features

Host Species:	Rabbit
Reactivity:	Human,Mouse,Rat
Applications:	WB,IHC,IF,IP,ELISA
Isotype:	IgG,Kappa
MW:	62 kD (Calculated) 62 kD (Observed)

Recommended Dilution Ratios

IHC:	1:200-1000
WB:	1:1000-5000
IF:	1:200-1000
ELISA:	1:5000-20000
IP:	1:50-200

Storage

-15°C to -25°C/1 year (Do not lower than -25°C)

Basic Information

Clonality	Monoclonal
-----------	------------

Immunogen Information

Specificity	Endogenous
-------------	------------

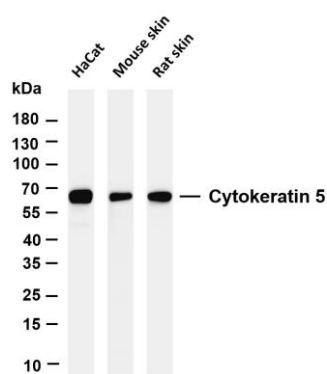
Target Information

Gene name	KRT5
Protein Name	Keratin type II cytoskeletal 5

Organism	Gene ID	UniProt ID
Human	3852	P13647
Mouse	110308	Q922U2
Rat	369017	Q6P6Q2

Cellular Localization	Cytoplasm
Tissue specificity	Expressed in corneal epithelium (at protein level).

Validation Data



Various whole cell lysates were separated by 4-20% SDS-PAGE, and the membrane was blotted with anti-Cytokeratin 5 antibody. The HRP-conjugated Goat anti-Rabbit IgG(H + L) antibody was used to detect the antibody.

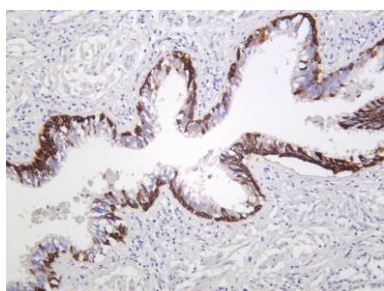
Lane 1: HaCat

Lane 2: Mouse skin

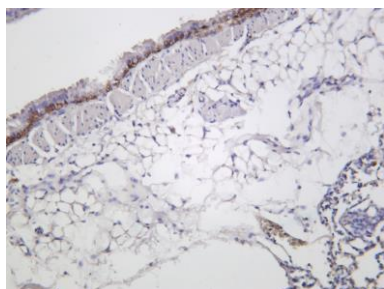
Lane 3: Rat skin

Predicted band size: 62kDa

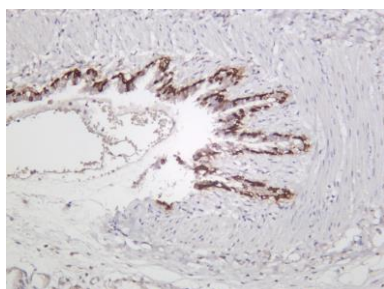
Observed band size: 62kDa



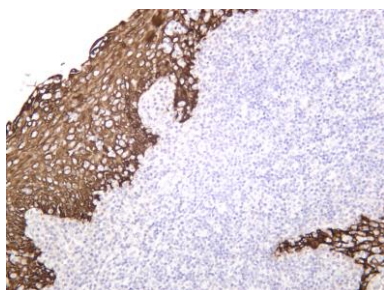
Human lung was stained with anti-Cytokeratin 5 rabbit antibody



Mouse lung was stained with anti-Cytokeratin 5 rabbit antibody



Rat lung was stained with anti-Cytokeratin 5 rabbit antibody



Human tonsil was stained with anti-Cytokeratin 5 rabbit antibody