

Cathepsin D Rabbit mAb (AR1116)

Key Features

Host Species:	Rabbit
Reactivity:	Human,Mouse,Rat
Applications:	WB,IHC,IF,IP,ELISA
Isotype:	IgG,Kappa
MW:	44 kD (Calculated) 44 kD (Observed)

Recommended Dilution Ratios

IHC:	1:200-1000
WB:	1:1000-5000
IF:	1:200-1000
ELISA:	1:5000-20000
IP:	1:50-200

Storage

-15°C to -25°C/1 year (Do not lower than -25°C)

Basic Information

Clonality	Monoclonal
-----------	------------

Immunogen Information

Specificity	Endogenous
-------------	------------

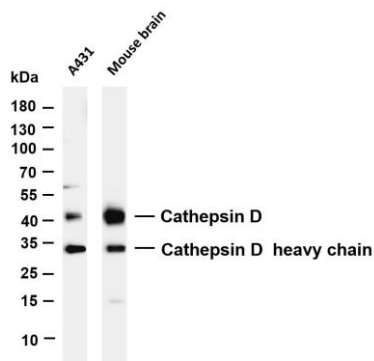
Target Information

Gene name	CTSD
Protein Name	Cathepsin D

Organism	Gene ID	UniProt ID
Human	1509	P07339
Mouse	13033	P18242

Cellular Localization	Secreted
Tissue specificity	Expressed in the aorta extracellular space (at protein level) (PubMed:20551380). Expressed in liver (at protein level) (PubMed:1426530).

Validation Data



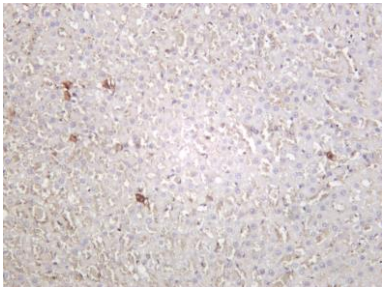
Various whole cell lysates were separated by 4-20% SDS-PAGE, and the membrane was blotted with anti-Cathepsin D antibody. The HRP- conjugated Goat anti-Rabbit IgG(H + L) antibody was used to detect the antibody.

Lane 1: A431

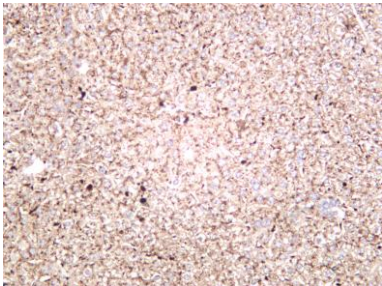
Lane 2: Mouse brain

Predicted band size: 44kDa

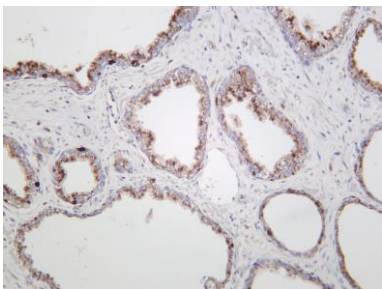
Observed band size: 44kDa



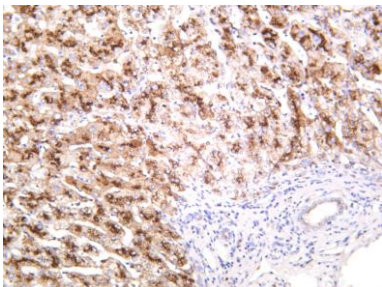
Rat liver was stained with anti-Cathepsin D rabbit antibody



Mouse liver was stained with anti-Cathepsin D rabbit antibody



Human prostate was stained with anti-Cathepsin D rabbit antibody



Human liver was stained with anti-Cathepsin D rabbit antibody