

Bcl-XL Rabbit mAb (AR1117)

Key Features

Host Species:	Rabbit
Reactivity:	Human, Mouse, Rat
Applications:	WB, IHC, IF, IP, ELISA
Isotype:	IgG, Kappa
MW:	26 kD (Calculated) 30 kD (Observed)

Recommended Dilution Ratios

IHC:	1:200-1000
WB:	1:1000-5000
IF:	1:200-1000
ELISA:	1:5000-20000
IP:	1:50-200

Storage

-15°C to -25°C/1 year (Do not lower than -25°C)

Basic Information

Clonality	Monoclonal
-----------	------------

Immunogen Information

Specificity	Endogenous
-------------	------------

Target Information

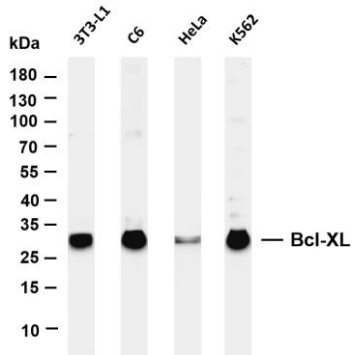
Gene name	BCL2L1
Protein Name	Bcl-2-like protein 1

Organism	Gene ID	UniProt ID
Human	598	Q07817
Mouse	12048	Q64373
Rat	24888	P53563

Cellular Localization	Cytoplasm
Tissue specificity	Bcl-X(S) is expressed at high levels in cells that undergo a high rate of turnover, such as developing lymphocytes. In contrast, Bcl-X(L) is

found in tissues containing long-lived postmitotic cells, such as adult brain.

Validation Data



Various whole cell lysates were separated by 4-20% SDS-PAGE, and the membrane was blotted with anti-Bcl-XL antibody. The HRP-conjugated Goat anti-Rabbit IgG(H + L) antibody was used to detect the antibody.

Lane 1: 3T3-L1

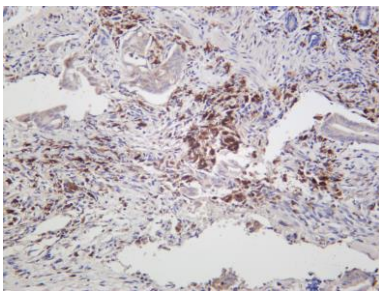
Lane 2: C6

Lane 3: HeLa

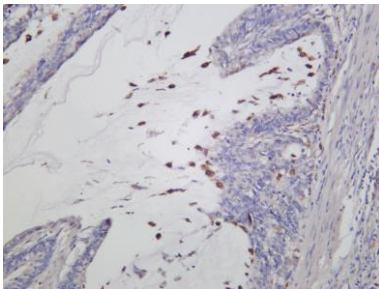
Lane 4: K562

Predicted band size: 26kDa

Observed band size: 30kDa



Human colon carcinoma was stained with anti-Bcl-XL rabbit antibody



Human colon carcinoma was stained with anti-Bcl-XL rabbit antibody

For Research Use Only