

EpCAM Rabbit mAb (AR1118)

Key Features

Host Species:	Rabbit
Reactivity:	Human, Mouse, Rat
Applications:	WB, IHC, IF, IP, ELISA
Isotype:	IgG, Kappa
MW:	35 kD (Calculated) 40 kD (Observed)

Recommended Dilution Ratios

IHC:	1:200-1000
WB:	1:1000-5000
IF:	1:200-1000
ELISA:	1:5000-20000
IP:	1:50-200

Storage

-15°C to -25°C/1 year (Do not lower than -25°C)

Basic Information

Clonality	Monoclonal
-----------	------------

Immunogen Information

Specificity	Endogenous
-------------	------------

Target Information

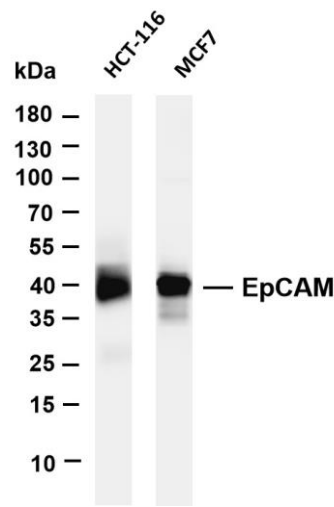
Gene Name	EPCAM ESA KSA M4S1
Protein Name	EPCAM

Organism	Gene ID	UniProt ID
Human	4072	P16422
Mouse	17075	Q99JW5

Cellular Localization	Membrane
Tissue specificity	Highly and selectively expressed by undifferentiated rather than differentiated embryonic stem cells (ESC). Levels rapidly diminish as soon as ESC's differentiate (at protein levels). Expressed in almost

all epithelial cell membranes but not on mesodermal or neural cell membranes. Found on the surface of adenocarcinoma.

Validation Data



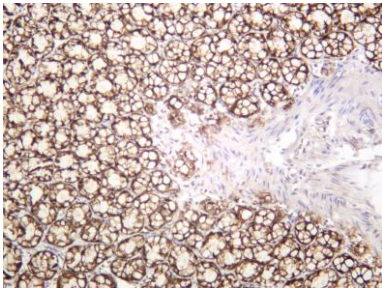
Various whole cell lysates were separated by 4-20% SDS-PAGE, and the membrane was blotted with anti-EpCAM antibody. The HRP-conjugated Goat anti-Rabbit IgG(H + L) antibody was used to detect the antibody.

Lane 1: HCT-116

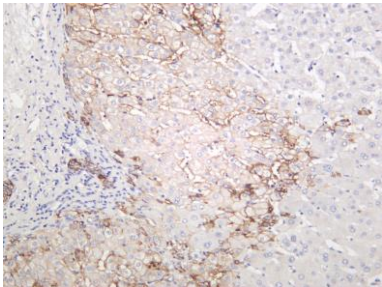
Lane 2: MCF7

Predicted band size: 35kDa

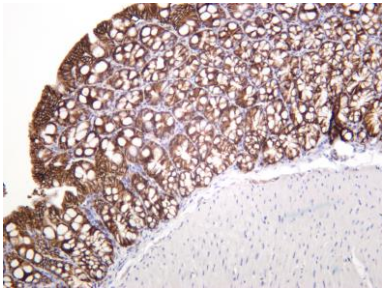
Observed band size: 40kDa



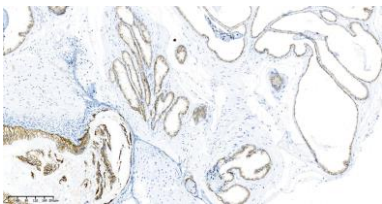
Rat colon was stained with anti-EpCAM rabbit antibody



Human liver was stained with anti-EpCAM rabbit antibody



Mouse colon was stained with anti-EpCAM rabbit antibody



Rat prostate was stained with anti-EpCAM Rabbit antibody

For Research Use Only