

MMP3 Rabbit mAb (AR1119)

Key Features

Host Species:	Rabbit
Reactivity:	Human, Mouse, Rat
Applications:	WB, IHC, IF, IP, ELISA
Isotype:	IgG, Kappa
MW:	54 kD (Calculated) 54 kD (Observed)

Recommended Dilution Ratios

IHC:	1:200-1000
WB:	1:1000-5000
IF:	1:200-1000
ELISA:	1:5000-20000
IP:	1:50-200

Storage

-15°C to -25°C/1 year (Do not lower than -25°C)

Basic Information

Clonality	Monoclonal
-----------	------------

Immunogen Information

Specificity	Endogenous
-------------	------------

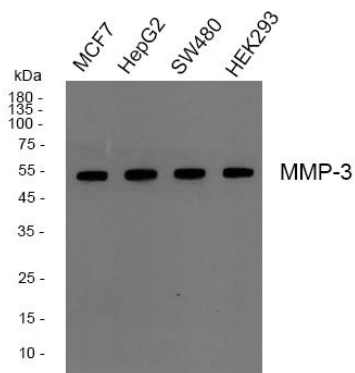
Target Information

Gene name	MMP3
Protein Name	Stromelysin-1

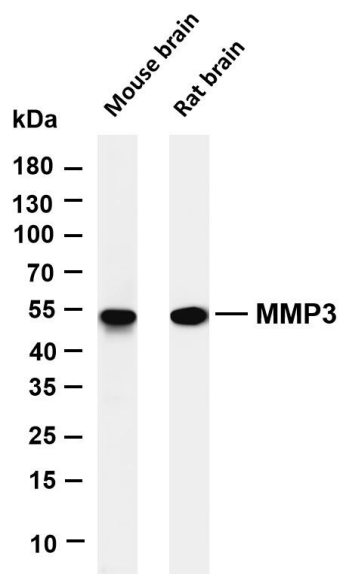
Organism	Gene ID	UniProt ID
Human	4314	P08254
Mouse	17392	P28862
Rat		P03957

Cellular Localization	Cytoplasm
Tissue specificity	Fibroblast, Lung, Synovium

Validation Data



Western blot analysis of MMP-3 Antibody, using HepG2, MCF7, SW480, HEK293 cell, 4 ° overnight, secondary antibody (was diluted at 1:10000, 37° 1 hour).



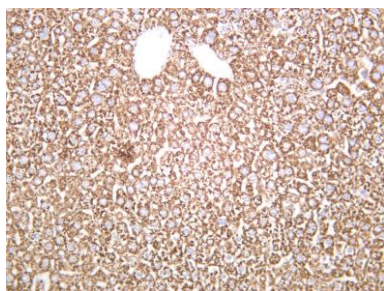
Various whole cell lysates were separated by 4-20% SDS-PAGE, and the membrane was blotted with anti-MMP3 antibody. The HRP-conjugated Goat anti-Rabbit IgG(H + L) antibody was used to detect the antibody.

Lane 1: Mouse brain

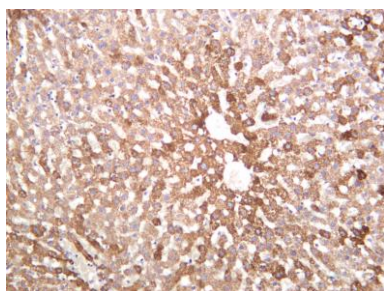
Lane 2: Rat brain

Predicted band size: 54kDa

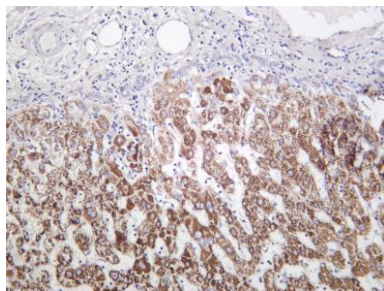
Observed band size: 54kDa



Mouse liver was stained with anti-MMP3 rabbit antibody



Rat liver was stained with anti-MMP3 rabbit antibody



Human liver was stained with anti-MMP3 rabbit antibody

For Research Use Only