

GFAP rabbit mAb (AR1120)

Key Features

Host Species:	Rabbit
Reactivity:	Human,Mouse,Rat
Applications:	WB,IHC,IF,IP,ELISA
Isotype:	IgG,Kappa
MW:	50 kD (Calculated) 50 kD (Observed)

Recommended Dilution Ratios

IHC:	1:200-1000
WB:	1:1000-5000
IF:	1:200-1000
ELISA:	1:5000-20000
IP:	1:50-200

Storage -15°C to -25°C/1 year (Do not lower than -25°C)

Basic Information

Clonality Monoclonal

Immunogen Information

Specificity Endogenous

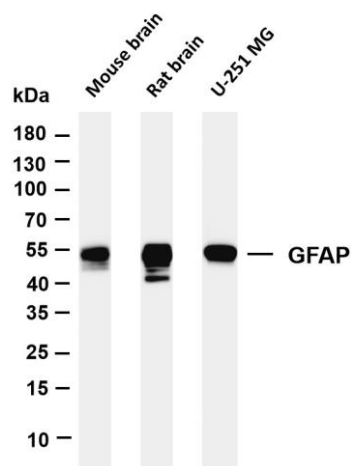
Target Information

Gene name GFAP
 Protein Name Glial fibrillary acidic protein

Organism	Gene ID	UniProt ID
Human	2670	P14136
Mouse	14580	P03995
Rat	24387	P47819

Cellular Localization Cytoplasm
 Tissue specificity Expressed in cells lacking fibronectin.

Validation Data



Various whole cell lysates were separated by 4-20% SDS-PAGE, and the membrane was blotted with anti-GFAP antibody. The HRP-conjugated Goat anti-Rabbit IgG(H + L) antibody was used to detect the antibody.

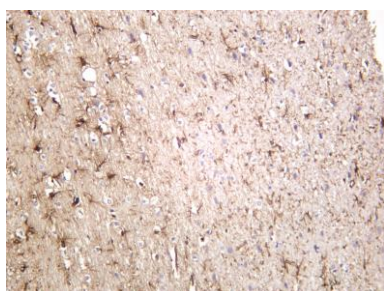
Lane 1: Mouse brain

Lane 2: Rat brain

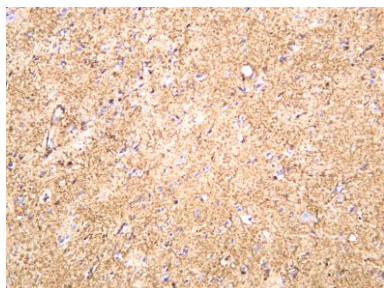
Lane 3: U-251MG

Predicted band size: 50kDa

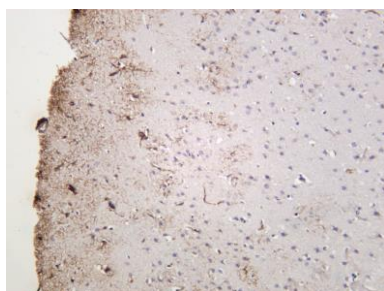
Observed band size: 50kDa



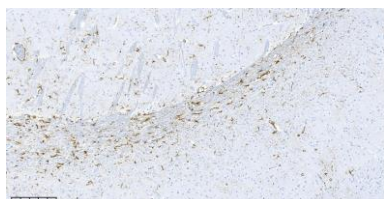
Rat brain was stained with anti-GFAP rabbit antibody



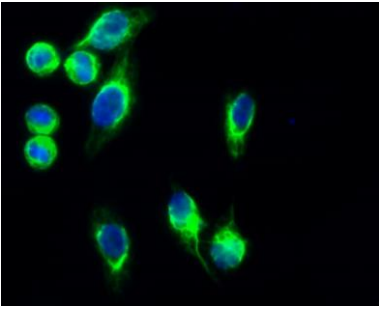
Human brain was stained with anti-GFAP rabbit antibody



Mouse brain was stained with anti-GFAP rabbit antibody



Mouse brain was stained with anti-GFAP Rabbit antibody



Immunofluorescence analysis of Hela cell.

1. GFAP Antibody(green) was diluted at 1:200(4° overnight).
2. Goat Anti Rabbit Alexa Fluor 488 was diluted at 1:1000(room temperature, 50min).
3. DAPI (blue) 10min.

For Research Use Only