

## ROCK1 Rabbit mAb (AR1122)

### Key Features

Host Species:	Rabbit
Reactivity:	Human, Mouse, Rat
Applications:	WB, IHC, IF, IP, ELISA
Isotype:	IgG, Kappa
MW:	158 kD (Calculated) 158 kD (Observed)

### Recommended Dilution Ratios

IHC:	1:200-1000
WB:	1:1000-5000
IF:	1:200-1000
ELISA:	1:5000-20000
IP:	1:50-200

### Storage

-15°C to -25°C/1 year (Do not lower than -25°C)

### Basic Information

Clonality	Monoclonal
-----------	------------

### Immunogen Information

Specificity	Endogenous
-------------	------------

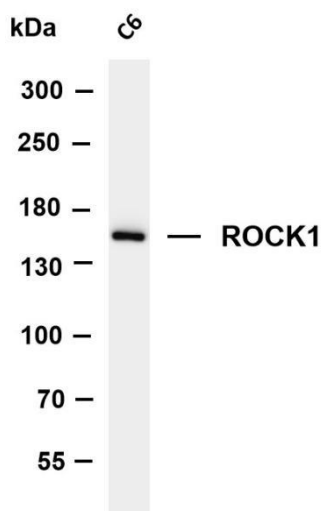
### Target Information

Gene name	ROCK1 P160ROCK ROCK-I
Protein Name	ROCK1

Organism	Gene ID	UniProt ID
Human	6093	Q13464
Mouse	19877	P70335
Rat	81762	Q63644

Cellular Localization	Cytoplasm, Membrane
Tissue specificity	Detected in blood platelets.

## Validation Data

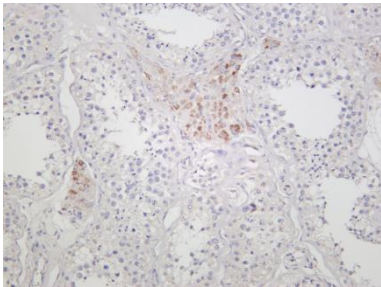


Various whole cell lysates were separated by 4-8% SDS-PAGE, and the membrane was blotted with anti-ROCK1 antibody. The HRP-conjugated Goat anti-Rabbit IgG(H + L) antibody was used to detect the antibody.

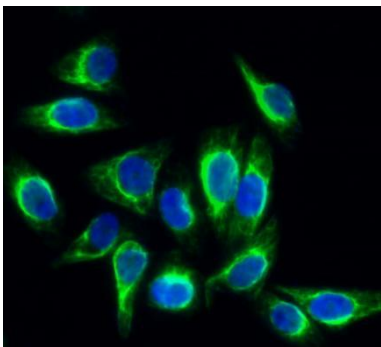
Lane 1: C6

Predicted band size: 158kDa

Observed band size: 158kDa



Human testis was stained with anti-ROCK1 rabbit antibody



Immunofluorescence analysis of HeLa cell.

1. Rock-1 Antibody(green) was diluted at 1:200(4° overnight).
2. Goat Anti Rabbit Alexa Fluor 488 was diluted at 1:1000(room temperature, 50min).
3. DAPI (blue) 10min.

For Research Use Only