

Glucocorticoid Receptor Rabbit mAb (AR1123)

Key Features

Host Species:	Rabbit
Reactivity:	Human, Mouse, Rat
Applications:	WB,IHC,IF,IP,ELISA
Isotype:	IgG,Kappa
MW:	85 kD (Calculated) 94 kD (Observed)

Recommended Dilution Ratios

IHC:	1:1000-4000
WB:	1:1000-5000
IF:	1:200-1000
ELISA:	1:5000-20000
IP:	1:50-200

Storage

-15°C to -25°C/1 year (Do not lower than -25°C)

Basic Information

Clonality	Monoclonal
-----------	------------

Immunogen Information

Specificity	Endogenous
-------------	------------

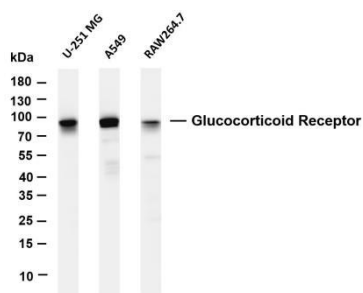
Target Information

Gene name	Nr3c1 Grl Grl1
Protein Name	Glucocorticoid receptor (GR) (Nuclear receptor subfamily 3 group C member 1))

Organism	Gene ID	UniProt ID
Human	2908	P04150

Cellular Localization	Nucleus
Tissue specificity	Expressed in spleen, kidney and liver. Expressed in a circadian manner in the liver. TISSUE SPECIFICITY: [Isoform 3]: Expressed at highest level in spleen with lesser amounts in kidney and liver.

Validation Data



Various whole cell lysates were separated by 4-20% SDS-PAGE, and the membrane was blotted with anti-Glucocorticoid Receptor antibody. The HRP-conjugated Goat anti-Rabbit IgG(H + L) antibody was used to detect the antibody.

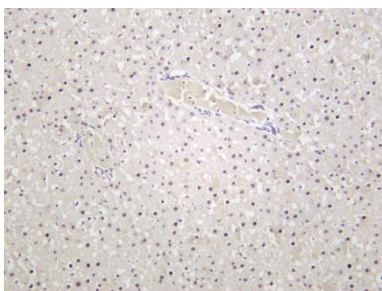
Lane 1: U-251 MG

Lane 2: A549

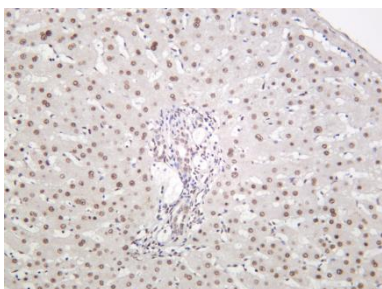
Lane 3: RAW264.7

Predicted band size: 85kDa

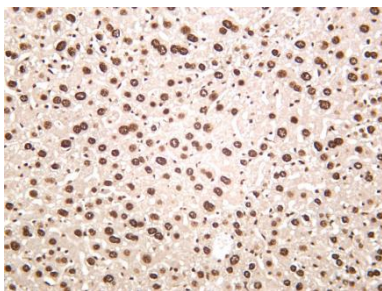
Observed band size: 94kDa



Rat liver was stained with anti-Glucocorticoid Receptor rabbit antibody



Rat liver was stained with anti-Glucocorticoid Receptor rabbit antibody



Mouse liver was stained with anti-Glucocorticoid Receptor rabbit antibody

For Research Use Only