

Rab 5A Rabbit mAb (AR1125)

Key Features

Host Species:	Rabbit
Reactivity:	Human, Mouse, Rat
Applications:	WB, IHC, IF, IP, ELISA
Isotype:	IgG, Kappa
MW:	24 kD (Calculated) 24 kD (Observed)

Recommended Dilution Ratios

IHC:	1:1000-4000
WB:	1:1000-5000
IF:	1:200-1000
ELISA:	1:5000-20000
IP:	1:50-200

Storage

-15°C to -25°C/1 year (Do not lower than -25°C)

Basic Information

Clonality	Monoclonal
-----------	------------

Immunogen Information

Specificity	Endogenous
-------------	------------

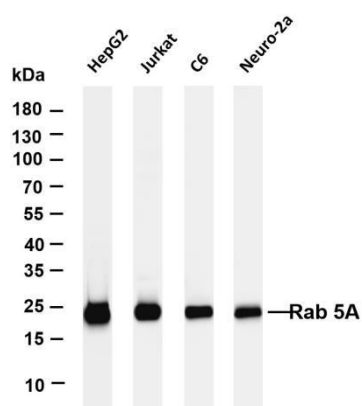
Target Information

Gene name	RAB5A RAB5
Protein Name	RAB5A

	Organism	Gene ID	UniProt ID
	Human	5868	P20339
	Mouse	271457	Q9CQD1

Cellular Localization	Cytoplasm, Membrane
Tissue specificity	Brain, Cervix, Cervix carcinoma, Placenta

Validation Data



Various whole cell lysates were separated by 4-20% SDS-PAGE, and the membrane was blotted with anti-Rab 5A antibody. The HRP-conjugated Goat anti-Rabbit IgG(H + L) antibody was used to detect the antibody.

Lane 1: HepG2

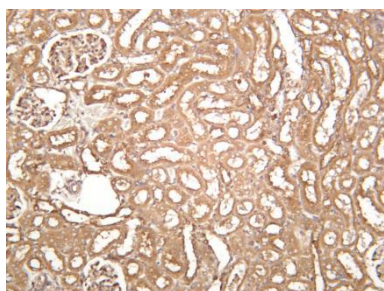
Lane 2: Jurkat

Lane 3: C6

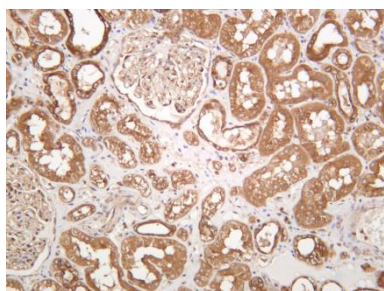
Lane 4: Neuro-2a

Predicted band size: 24kDa

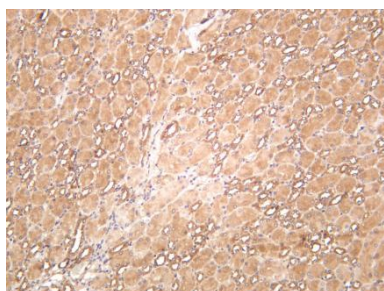
Observed band size: 24kDa



Rat kidney was stained with anti-Rab 5A rabbit antibody



Rat kidney was stained with anti-Rab 5A rabbit antibody



Mouse kidney was stained with anti-Rab 5A rabbit antibody

For Research Use Only