

XBP1 Rabbit mAb (AR1126)

Key Features

Host Species:	Rabbit
Reactivity:	Human,Mouse,Rat
Applications:	WB,IHC,IF,IP,ELISA
Isotype:	IgG,Kappa
MW:	29 kD (Calculated) 35kD,60 kD (Observed)

Recommended Dilution Ratios

IHC:	1:200-1000
WB:	1:1000-5000
IF:	1:200-1000
ELISA:	1:5000-20000
IP:	1:50-200

Storage

-15°C to -25°C/1 year (Do not lower than -25°C)

Basic Information

Clonality	Monoclonal
-----------	------------

Immunogen Information

Specificity	Endogenous
-------------	------------

Target Information

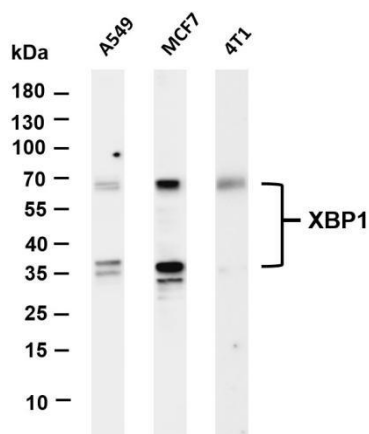
Gene name	XBP1 XBP2 TREB5 XBP-1 TREB-5
Protein Name	XBP1

Organism	Gene ID	UniProt ID
Human	7494	P17861
Mouse		O35426

Cellular Localization	Nucleus
Tissue specificity	Expressed in plasma cells in rheumatoid synovium. Over-expressed in primary breast cancer and metastatic breast cancer cells. Isoform 1 and isoform 2 are expressed at higher level in

proliferating as compared to confluent quiescent endothelial cells.

Validation Data



Various whole cell lysates were separated by 4-20% SDS-PAGE, and the membrane was blotted with anti-XBP1 antibody. The HRP-conjugated Goat anti-Rabbit IgG(H + L) antibody was used to detect the antibody.

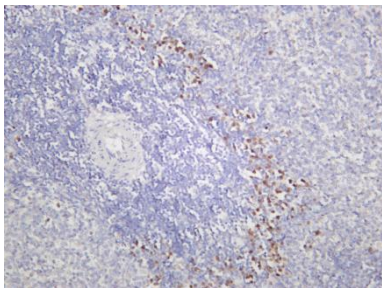
Lane 1: A549

Lane 2: MCF7

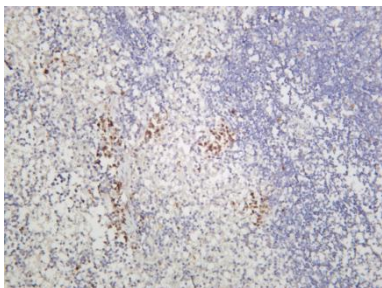
Lane 3: 4T1

Predicted band size: 29kDa

Observed band size: 35, 60kDa



Rat spleen was stained with anti-XBP1 rabbit antibody



Rat spleen was stained with anti-XBP1 rabbit antibody

For Research Use Only