

YTHDF1 Rabbit mAb (AR1128)

Key Features

Host Species:	Rabbit
Reactivity:	Human, Mouse, Rat
Applications:	WB, IHC, IF, IP, ELISA
Isotype:	IgG, Kappa
MW:	61kD (Calculated) 70kD (Observed)

Recommended Dilution Ratios

IHC:	1:200-1000
WB:	1:1000-5000
IF:	1:200-1000
ELISA:	1:5000-20000
IP:	1:50-200

Storage

-15°C to -25°C/1 year (Do not lower than -25°C)

Basic Information

Clonality	Monoclonal
-----------	------------

Immunogen Information

Specificity	Endogenous
-------------	------------

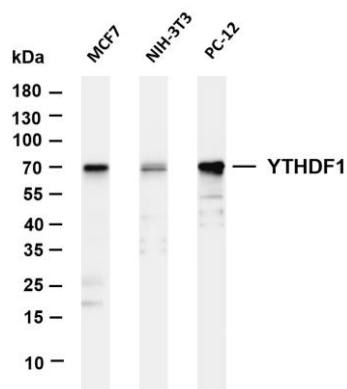
Target Information

Gene name	Ythdf1
Protein Name	YTH domain-containing family protein 1 (Dermatomyositis associated with cancer putative autoantigen 1 homolog) (DACA-1 homolog)

Organism	Gene ID	UniProt ID
Human	54915	Q9BYJ9
Rat		P59326

Cellular Localization	Cytoplasm
Tissue specificity	In brain, preferentially expressed in the hippocampus. {ECO:0000269 PubMed:30401835}

Validation Data



Various whole cell lysates were separated by 4-20% SDS-PAGE, and the membrane was blotted with anti-YTHDF1 antibody. The HRP-conjugated Goat anti-Rabbit IgG(H + L) antibody was used to detect the antibody.

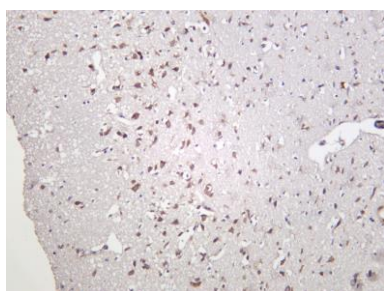
Lane 1: MCF7

Lane 2: NIH-3T3

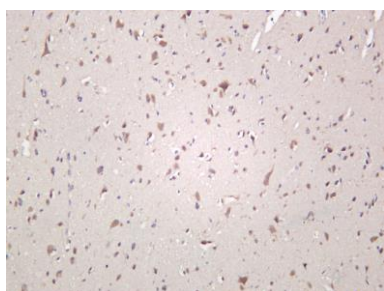
Lane 3: PC-12

Predicted band size: 61kDa

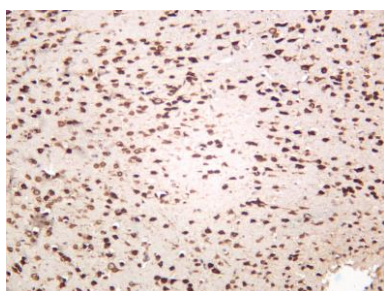
Observed band size: 70kDa



Rat brain was stained with anti-YTHDF1 rabbit antibody



Human brain was stained with anti-YTHDF1 rabbit antibody



Human brain was stained with anti-YTHDF1 rabbit antibody

For Research Use Only