

Hsp60 Rabbit mAb (AR1129)

Key Features

Host Species:	Rabbit
Reactivity:	Human,Mouse,Rat
Applications:	WB,IHC,IF,IP,ELISA
Isotype:	IgG,Kappa
MW:	60kD (Calculated) 60kD (Observed)

Recommended Dilution Ratios

IHC:	1:1000-1000
WB:	1:1000-5000
IF:	1:200-1000
ELISA:	1:5000-20000
IP:	1:50-200

Storage

-15°C to -25°C/1 year (Do not lower than -25°C)

Basic Information

Clonality	Monoclonal
-----------	------------

Immunogen Information

Specificity	Endogenous
-------------	------------

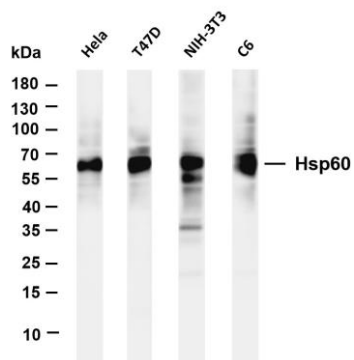
Target Information

Gene name	HSP60 HLD4
Protein Name	HSPD1

Organism	Gene ID	UniProt ID
Human	3329	P10809
Mouse	15510	P63038
Rat	63868	P63039

Cellular Localization	Mitochondrion matrix
Tissue specificity	Adipocyte, Adrenal gland, B-cell lymphoma, Brain, Cajal-Retzius

Validation Data



Various whole cell lysates were separated by 4-20% SDS-PAGE, and the membrane was blotted with anti-Hsp60 antibody. The HRP-conjugated Goat anti-Rabbit IgG(H + L) antibody was used to detect the antibody.

Lane 1: HeLa

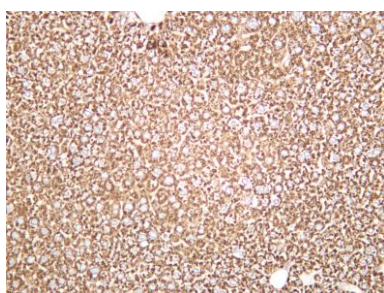
Lane 2: T47D

Lane 3: NIH-3T3

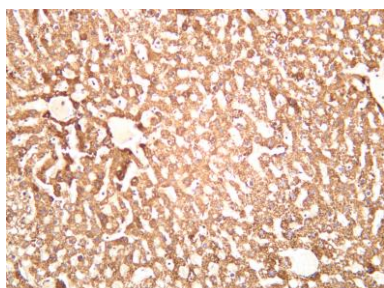
Lane 4: C6

Predicted band size: 60kDa

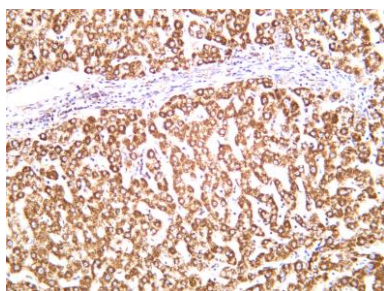
Observed band size: 60kDa



Mouse liver was stained with anti-Hsp60 rabbit antibody



Rat liver was stained with anti-Hsp60 rabbit antibody



Human liver was stained with anti-Hsp60 rabbit antibody

For Research Use Only