

Histone H2A.X (phospho Ser139) Rabbit mAb (AR1130)

Key Features

Host Species:	Rabbit
Reactivity:	Human, Mouse, Rat
Applications:	WB,IHC,IF,IP,ELISA
Isotype:	IgG,Kappa
MW:	15kD (Calculated) 15kD (Observed)

Recommended Dilution Ratios

IHC:	1:2000-8000
WB:	1:1000-5000
IF:	1:200-1000
ELISA:	1:5000-20000
IP:	1:50-200

Storage

-15°C to -25°C/1 year (Do not lower than -25°C)

Basic Information

Clonality	Monoclonal
-----------	------------

Immunogen Information

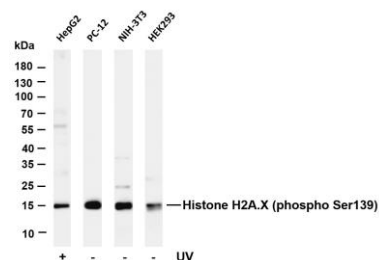
Specificity	This antibody detects endogenous levels of Histone H2A.X only when phosphorylated at Ser139. This antibody does not recognize phosphorylated at other sites.
-------------	--

Target Information

Gene name	H2AFX
Protein Name	Histone H2A.x

	Organism	Gene ID	UniProt ID
	Human	3014	P16104
	Mouse	15270	P27661
Cellular Localization	Nucleus		

Validation Data



Various whole cell lysates were separated by 4-20% SDS-PAGE, and the membrane was blotted with anti-Histone H2A.X (phospho Ser139) antibody. The HRP-conjugated Goat anti-Rabbit IgG(H + L) antibody was used to detect the antibody.

Lane 1: HepG2 treated with UV for 30 minutes

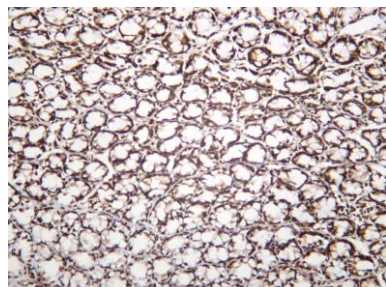
Lane 2: PC-12

Lane 3: NIH-3T3

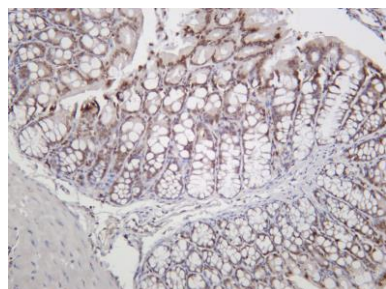
Lane 4: HEK293

Predicted band size: 15kDa

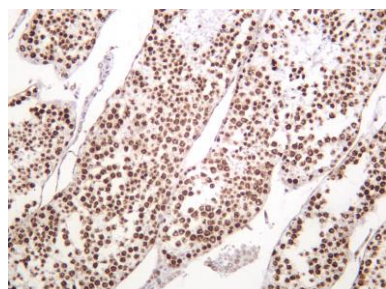
Observed band size: 15kDa



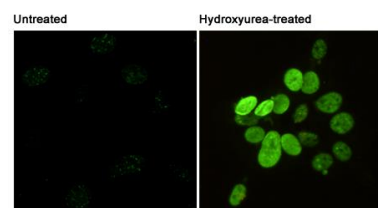
Mouse testis was stained with anti-Histone H2A.X (phospho Ser139) rabbit antibody



Rat colon was stained with anti-Histone H2A.X (phospho Ser139) rabbit antibody



Mouse colon was stained with anti-Histone H2A.X (phospho Ser139) rabbit antibody



Immunofluorescent analysis of Phosphorylation of H2A.X at Serine 139 in 3T3 or Hydroxyurea-treated 3T3 cells using Phospho-Histone H2A.X