

p27 KIP 1 Rabbit mAb (AR1131)

Key Features

Host Species:	Rabbit
Reactivity:	Human, Mouse, Rat
Applications:	WB, IHC, IF, IP, ELISA
Isotype:	IgG, Kappa
MW:	22kD (Calculated) 27kD (Observed)

Recommended Dilution Ratios

IHC:	1:200-1000
WB:	1:1000-5000
IF:	1:200-1000
ELISA:	1:5000-20000
IP:	1:50-200

Storage

-15°C to -25°C/1 year (Do not lower than -25°C)

Basic Information

Clonality	Monoclonal
-----------	------------

Immunogen Information

Specificity	Endogenous
-------------	------------

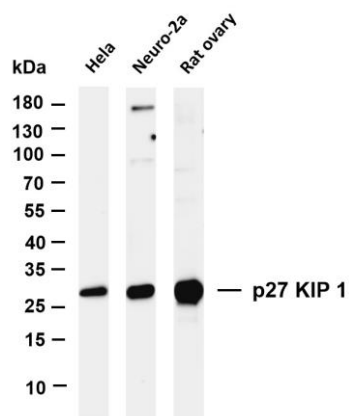
Target Information

Gene name	CDKN1B
Protein Name	Cyclin-dependent kinase inhibitor 1B

Organism	Gene ID	UniProt ID
Human	1027	P46527
Mouse		P46414

Cellular Localization	Nucleus
Tissue specificity	Expressed in kidney (at protein level). Expressed in all tissues tested. Highest levels in skeletal muscle, lowest in liver and kidney.

Validation Data



Various whole cell lysates were separated by 4-20% SDS-PAGE, and the membrane was blotted with anti-p27 KIP 1 antibody. The HRP-conjugated Goat anti-Rabbit IgG(H + L) antibody was used to detect the antibody.

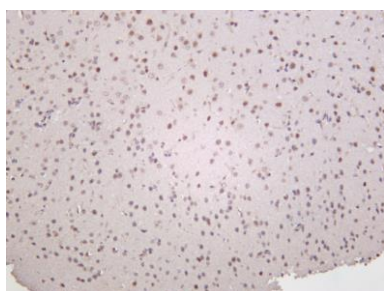
Lane 1: HeLa

Lane 2: Neuro-2a

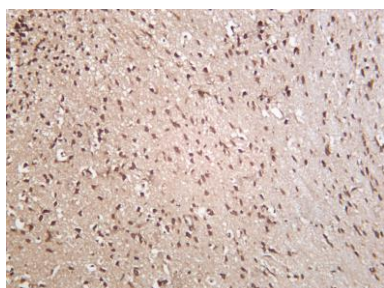
Lane 3: Rat ovary

Predicted band size: 22kDa

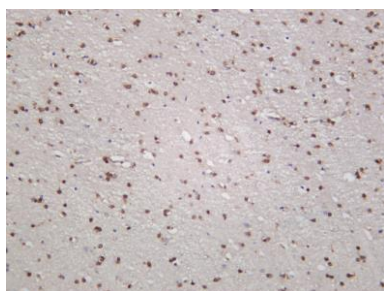
Observed band size: 27kDa



Mouse brain was stained with anti-p27 KIP 1 rabbit antibody



Rat brain was stained with anti-p27 KIP 1 rabbit antibody



Rat brain was stained with anti-p27 KIP 1 rabbit antibody

For Research Use Only