

Glutamine Synthetase Rabbit mAb (AR1132)

Key Features

| | |
|---------------|--------------------------------------|
| Host Species: | Rabbit |
| Reactivity: | Human, Mouse, Rat |
| Applications: | WB, IHC, IF, IP, ELISA |
| Isotype: | IgG, Kappa |
| MW: | 42kD (Calculated) 42kD (Observed) |

Recommended Dilution Ratios

| | |
|--------|--------------|
| IHC: | 1:1000-4000 |
| WB: | 1:1000-5000 |
| IF: | 1:200-1000 |
| ELISA: | 1:5000-20000 |
| IP: | 1:50-200 |

Storage -15°C to -25°C/1 year (Do not lower than -25°C)

Basic Information

Clonality Monoclonal

Immunogen Information

Specificity Endogenous

Target Information

Gene name GLUL GLNS
Protein Name GLUL

| Organism | Gene ID | UniProt ID |
|----------|---------|------------|
| Human | 2752 | P15104 |
| Mouse | 14645 | P15105 |
| Rat | 24957 | P09606 |

Cellular Localization Cytoplasm, Membrane
Tissue specificity Expressed in endothelial cells.

Validation Data



Various whole cell lysates were separated by 4-20% SDS-PAGE, and the membrane was blotted with anti-Glutamine Synthetase antibody. The HRP-conjugated Goat anti-Rabbit IgG(H + L) antibody was used to detect the antibody.

Lane 1: HepG2

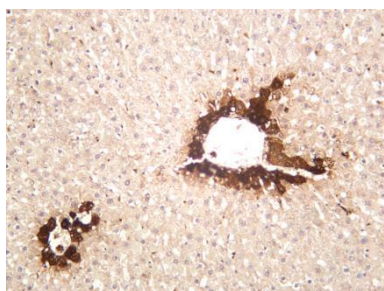
Lane 2: Jurkat

Lane 3: Rat liver

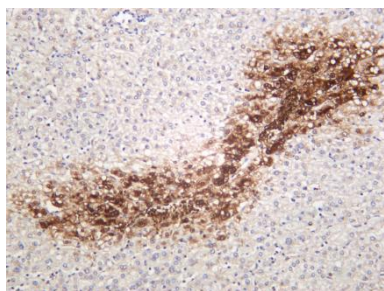
Lane 4: Mouse liver

Predicted band size: 42kDa

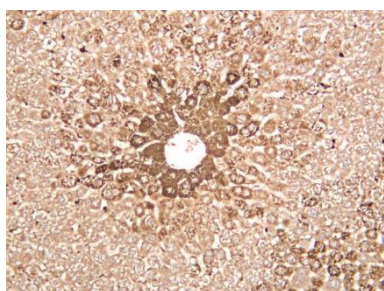
Observed band size: 42kDa



Rat liver was stained with anti-Glutamine Synthetase rabbit antibody



Human hepatocellular carcinoma was stained with anti-Glutamine Synthetase rabbit antibody



Mouse liver was stained with anti-Glutamine Synthetase rabbit antibody

For Research Use Only