

Cyclin B1 (Phospho Ser126) Rabbit mAb (AR1133)

Key Features

Host Species:	Rabbit
Reactivity:	Human
Applications:	WB,IHC,IF,IP,ELISA
Isotype:	IgG,Kappa
MW:	48kD (Calculated) 55kD (Observed)

Recommended Dilution Ratios

IHC:	1:500-1000
WB:	1:1000-5000
IF:	1:200-1000
ELISA:	1:5000-20000
IP:	1:50-200

Storage

-15°C to -25°C/1 year (Do not lower than -25°C)

Basic Information

Clonality	Monoclonal
-----------	------------

Immunogen Information

Specificity	This antibody detects endogenous levels of Cyclin B1 only when phosphorylated at Ser126. This antibody does not recognize phosphorylated at other sites.
-------------	--

Target Information

Gene name	CCNB1 CCNB
Protein Name	CCNB1

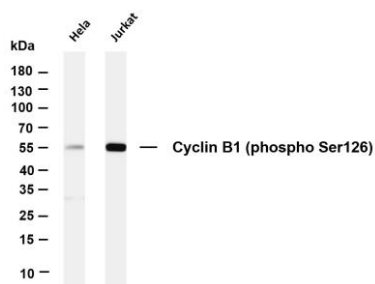
Organism	Gene ID	UniProt ID
Human	891	P14635
Mouse	268697	P24860
Rat	25203	P30277

Cellular Localization	Cytoplasm, Nuclear
-----------------------	--------------------

Tissue specificity

Breast adenocarcinoma, Lung, Placenta

Validation Data



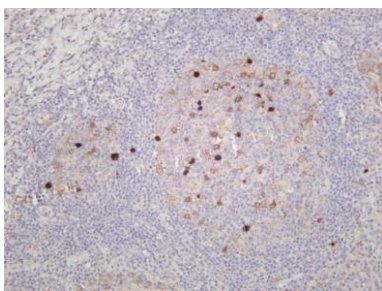
Various whole cell lysates were separated by 4-20% SDS-PAGE, and the membrane was blotted with anti-Cyclin B1 (phospho Ser126) antibody. The HRP-conjugated Goat anti-Rabbit IgG(H + L) antibody was used to detect the antibody.

Lane 1: HeLa

Lane 2: Jurkat

Predicted band size: 48kDa

Observed band size: 55kDa



Human tonsil was stained with anti-Cyclin B1 (phospho Ser126) rabbit antibody

For Research Use Only