

Chromogranin A Rabbit mAb (AR1135)

Key Features

Host Species:	Rabbit
Reactivity:	Human,Mouse,Rat
Applications:	WB,IHC,IF,IP,ELISA
Isotype:	IgG,Kappa
MW:	51kD (Calculated) 80kD (Observed)

Recommended Dilution Ratios

IHC:	1:200-1000
WB:	1:1000-5000
IF:	1:200-1000
ELISA:	1:5000-20000
IP:	1:50-200

Storage

-15°C to -25°C/1 year (Do not lower than -25°C)

Basic Information

Clonality	Monoclonal
-----------	------------

Immunogen Information

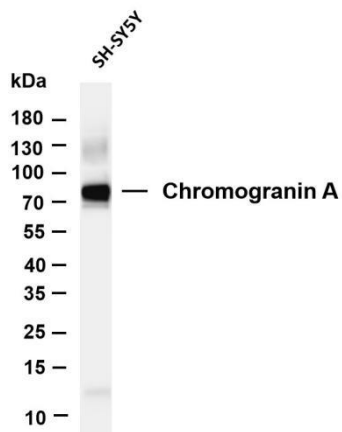
Specificity	Endogenous
-------------	------------

Target Information

Gene Name	CHGA
Protein Name	CHGA

	Organism	Gene ID	UniProt ID
	Human	1113	P10645
	Mouse		P26339
	Rat		P10354
Cellular Localization	Secreted		
Tissue specificity	Pancreas/ stomach		

Validation Data

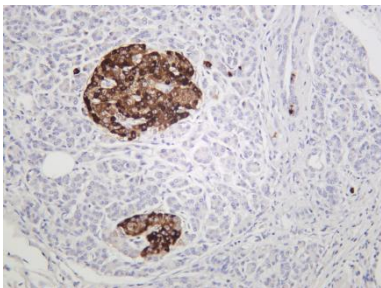


Various whole cell lysates were separated by 4-20% SDS-PAGE, and the membrane was blotted with anti-Chromogranin A antibody. The HRP-conjugated Goat anti-Rabbit IgG(H + L) antibody was used to detect the antibody.

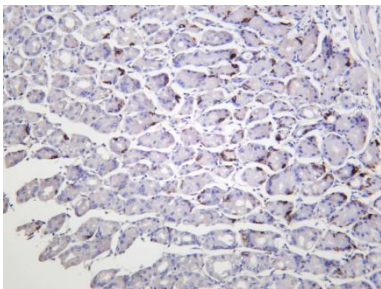
Lane 1: SH-SY5Y

Predicted band size: 51kDa

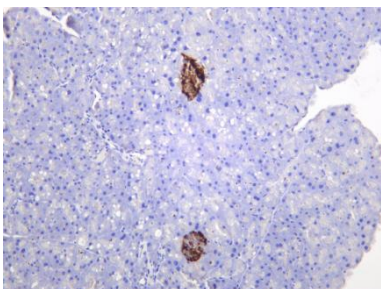
Observed band size: 80kDa



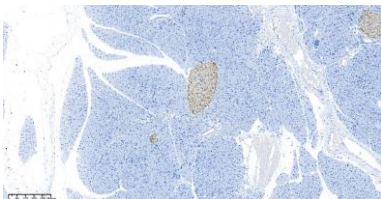
Human pancreas was stained with anti-Chromogranin A rabbit antibody



Human stomach was stained with anti-Chromogranin A rabbit antibody



Mouse pancreas was stained with anti-Chromogranin A rabbit antibody



Mouse pancreas was stained with anti-Chromogranin A Rabbit antibody