

NQO1 Rabbit mAb (AR1134)

Key Features

Host Species:	Rabbit
Reactivity:	Human, Mouse, Rat
Applications:	WB, IHC, IF, IP, ELISA
Isotype:	IgG, Kappa
MW:	31kD (Calculated) 31kD (Observed)

Recommended Dilution Ratios

IHC:	1:200-1000
WB:	1:1000-5000
IF:	1:200-1000
ELISA:	1:5000-20000
IP:	1:50-200

Storage -15°C to -25°C/1 year (Do not lower than -25°C)

Basic Information

Clonality Monoclonal

Immunogen Information

Specificity Endogenous

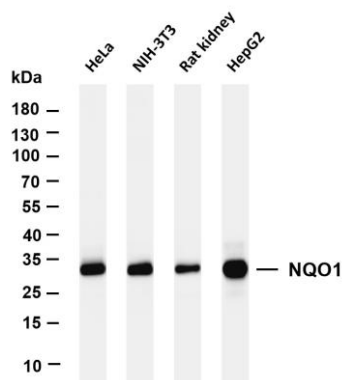
Target Information

Gene name NQO1
 Protein Name NQO1

Organism	Gene ID	UniProt ID
Human	1728	P15559
Mouse		Q64669

Cellular Localization Cytoplasm
 Tissue specificity Colon, Liver, Pooled

Validation Data



Various whole cell lysates were separated by 4-20% SDS-PAGE, and the membrane was blotted with anti-NQO1 antibody. The HRP-conjugated Goat anti-Rabbit IgG(H + L) antibody was used to detect the antibody.

Lane 1: HeLa

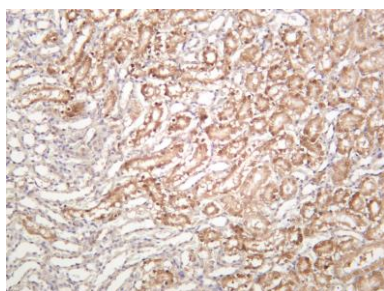
Lane 2: NIH-3T3

Lane 3: Rat kidney

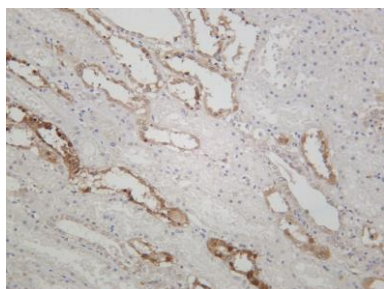
Lane 4: HepG2

Predicted band size: 31kDa

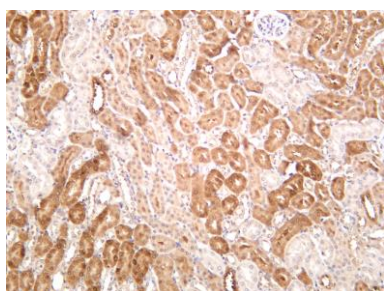
Observed band size: 31kDa



Rat kidney was stained with anti-NQO1 rabbit antibody



Human kidney was stained with anti-NQO1 rabbit antibody



Mouse kidney was stained with anti-NQO1 rabbit antibody

For Research Use Only