

S6K1 Rabbit mAb (AR1136)

Key Features

Host Species:	Rabbit
Reactivity:	Human,Mouse,Rat
Applications:	WB,IHC,IF,IP,ELISA
Isotype:	IgG,Kappa
MW:	59kD (Calculated) 70kD (Observed)

Recommended Dilution Ratios

IHC:	1:200-1000
WB:	1:1000-5000
IF:	1:200-1000
ELISA:	1:5000-20000
IP:	1:50-200

Storage -15°C to -25°C/1 year (Do not lower than -25°C)

Basic Information

Clonality Monoclonal

Immunogen Information

Specificity Endogenous

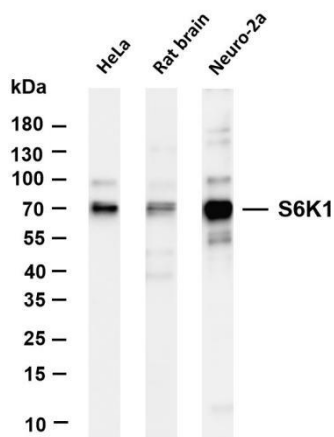
Target Information

Gene name S6K1
Protein Name RPS6KB1

Organism	Gene ID	UniProt ID
Human	6198	P23443
Mouse	72508	Q8BSK8
Rat	83840	P67999

Cellular Localization Cytoplasm
Tissue specificity Widely expressed

Validation Data



Various whole cell lysates were separated by 4-20% SDS-PAGE, and the membrane was blotted with anti-S6K1 antibody. The HRP-conjugated Goat anti-Rabbit IgG(H + L) antibody was used to detect the antibody.

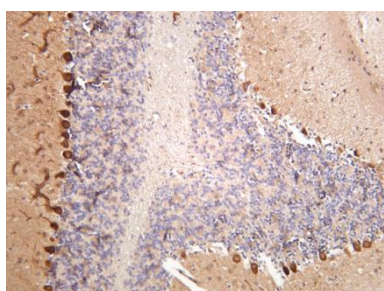
Lane 1: HeLa

Lane 2: Rat brain

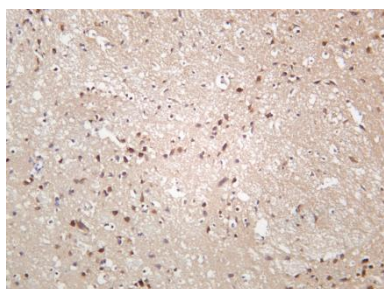
Lane 3: Neuro-2a

Predicted band size: 59kDa

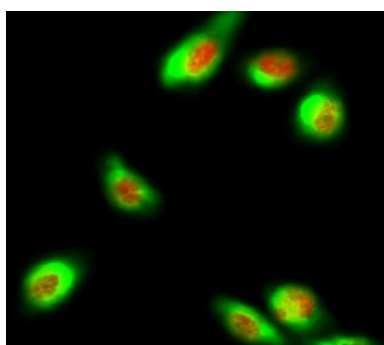
Observed band size: 70kDa



Rat brain was stained with anti-S6K1 rabbit antibody



Rat brain was stained with anti-S6K1 rabbit antibody



Immunofluorescence analysis of HeLa cell.

1. p70 S6 kinase α Antibody(red) was diluted at 1:200(4 ° overnight). CK7 Monoclonal Antibody(12D7) (green) was diluted at 1:200(4° overnight).
2. Goat Anti Rabbit Alexa Fluor 594 was diluted at 1:1000(room temperature, 50min). Goat Anti Mouse Alexa Fluor 488 was diluted at 1:1000(room temperature, 50min).

For Research Use Only