

Stromal Interaction Molecule 1 Rabbit mAb (AR1137)

Key Features

Host Species:	Rabbit
Reactivity:	Human,Mouse,Rat
Applications:	WB,IHC,IF,IP,ELISA
Isotype:	IgG,Kappa
MW:	77kD (Calculated) 77kD (Observed)

Recommended Dilution Ratios

IHC:	1:200-1000
WB:	1:1000-5000
IF:	1:200-1000
ELISA:	1:5000-20000
IP:	1:50-200

Storage

-15°C to -25°C/1 year (Do not lower than -25°C)

Basic Information

Clonality	Monoclonal
-----------	------------

Immunogen Information

Specificity	Endogenous
-------------	------------

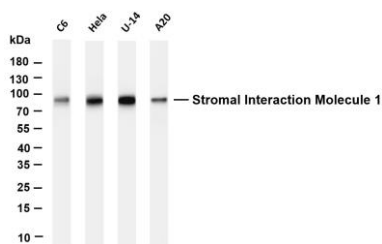
Target Information

Gene Name	STIM1
Protein Name	STIM1 GOK

Organism	Gene ID	UniProt ID
Human	6786	Q13586
Mouse	20866	P70302
Rat	361618	P84903

Cellular Localization	Membrane
Tissue specificity	Ubiquitously expressed in various human primary cells and tumor cell lines.

Validation Data



Various whole cell lysates were separated by 4-20% SDS-PAGE, and the membrane was blotted with anti-Stromal Interaction Molecule 1 antibody. The HRP-conjugated Goat anti-Rabbit IgG(H + L) antibody was used to detect the antibody.

Lane 1: C6

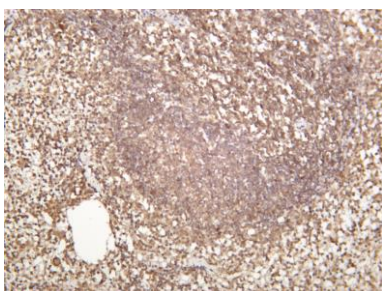
Lane 2: HeLa

Lane 3: U-14

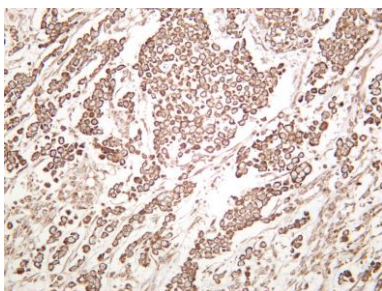
Lane 4: A20

Predicted band size: 77kDa

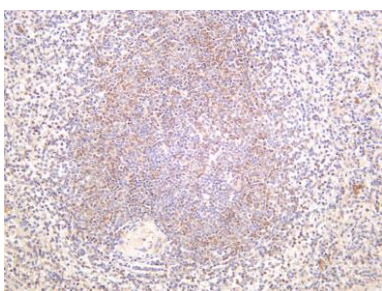
Observed band size: 77kDa



Mouse spleen was stained with anti-Stromal Interaction Molecule 1 rabbit antibody



Human breast was stained with anti-Stromal Interaction Molecule 1 rabbit antibody



Human spleen was stained with anti-Stromal Interaction Molecule 1 rabbit antibody

For Research Use Only