

# KAP1 Rabbit mAb (AR1138)

## Key Features

Host Species:	Rabbit
Reactivity:	Human,Mouse,Rat
Applications:	WB,IHC,IF,IP,ELISA
Isotype:	IgG,Kappa
MW:	89kD (Calculated) 110kD (Observed)

## Recommended Dilution Ratios

IHC:	1:200-1000
WB:	1:1000-5000
IF:	1:200-1000
ELISA:	1:5000-20000
IP:	1:50-200

## Storage

-15°C to -25°C/1 year (Do not lower than -25°C)

## Basic Information

Clonality	Monoclonal
-----------	------------

## Immunogen Information

Specificity	Endogenous
-------------	------------

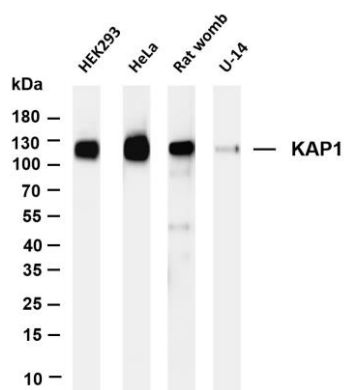
## Target Information

Gene Name	TRIM28 KAP1 RNF96 TIF1B
Protein Name	TRIM28

Organism	Gene ID	UniProt ID
Human	10155	Q13263
Mouse	21849	Q62318
Rat	116698	O08629

Cellular Localization	Nucleus
Tissue specificity	Expressed in all tissues tested including spleen, thymus, prostate, testis, ovary, small intestine, colon and peripheral blood leukocytes.

## Validation Data



Various whole cell lysates were separated by 4-20% SDS-PAGE, and the membrane was blotted with anti-KAP1 antibody. The HRP-conjugated Goat anti-Rabbit IgG(H + L) antibody was used to detect the antibody.

Lane 1: HEK293

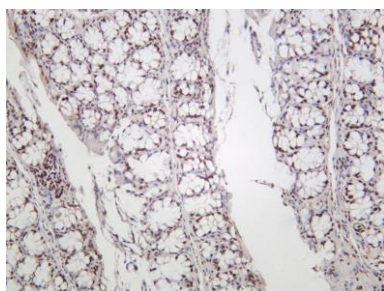
Lane 2: HeLa

Lane 3: Rat womb

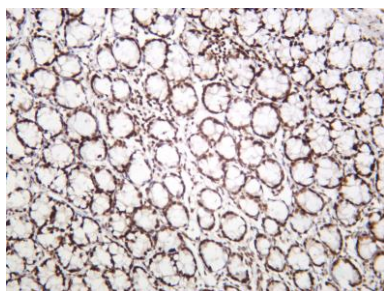
Lane 4: U-14

Predicted band size: 89kDa

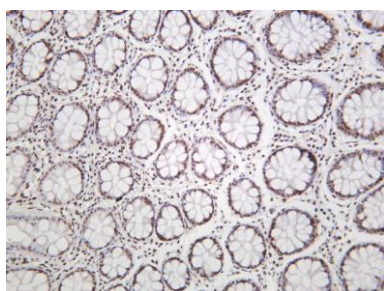
Observed band size: 110kDa



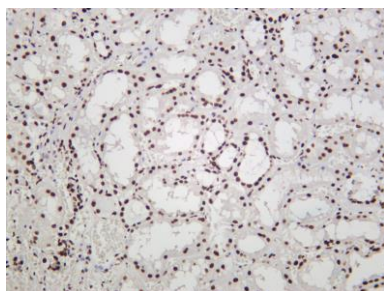
Mouse colon was stained with anti-KAP1 rabbit antibody



Rat colon was stained with anti-KAP1 rabbit antibody



Human colon was stained with anti-KAP1 rabbit antibody



Human kidney was stained with anti-KAP1 rabbit antibody