

PGC1 β Rabbit mAb (AR1139)

Key Features

Host Species:	Rabbit
Reactivity:	Human, Mouse, Rat
Applications:	WB, IF, IP, ELISA
Isotype:	IgG, Kappa
MW:	113kD (Calculated) 113kD (Observed)

Recommended Dilution Ratios

WB:	1:1000-5000
IF:	1:200-1000
ELISA:	1:5000-20000
IP:	1:50-200

Storage

-15°C to -25°C/1 year (Do not lower than -25°C)

Basic Information

Clonality	Monoclonal
-----------	------------

Immunogen Information

Specificity	Endogenous
-------------	------------

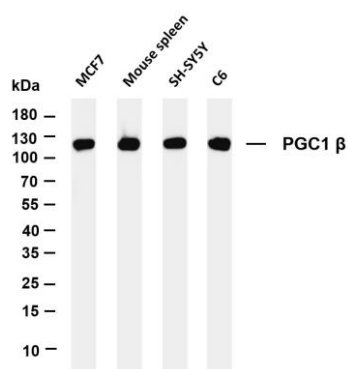
Target Information

Gene name	PPARGC1B PERC PGC1 PGC1B PPARGC1
Protein Name	PPARGC1B

Organism	Gene ID	UniProt ID
Human	133522	Q86YN6
Mouse	170826	Q8VHJ7
Rat	291567	Q811R2

Cellular Localization	Nucleus
Tissue specificity	Ubiquitous with higher expression in heart, brain and skeletal muscle.

Validation Data



Various whole cell lysates were separated by 4-20% SDS-PAGE, and the membrane was blotted with anti-PGC1 β antibody. The HRP-conjugated Goat anti-Rabbit IgG(H + L) antibody was used to detect the antibody.

Lane 1: MCF7

Lane 2: Mouse spleen

Lane 3: SH-SY5Y

Lane 4: C6

Predicted band size: 113kDa

Observed band size: 113kDa

For Research Use Only