

Bad Rabbit mAb (AR1140)

Key Features

Host Species:	Rabbit
Reactivity:	Human, Mouse, Rat
Applications:	WB, IHC, IF, IP, ELISA
Isotype:	IgG, Kappa
MW:	18kD (Calculated) 23kD (Observed)

Recommended Dilution Ratios

IHC:	1:200-1000
WB:	1:1000-5000
IF:	1:200-1000
ELISA:	1:5000-20000
IP:	1:50-200

Storage

-15°C to -25°C/1 year (Do not lower than -25°C)

Basic Information

Clonality	Monoclonal
-----------	------------

Immunogen Information

Specificity	Endogenous
-------------	------------

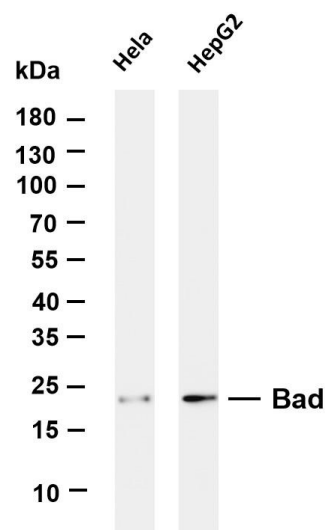
Target Information

Gene name	BAD BBC2 BCL2L8
Protein Name	BAD

Organism	Gene ID	UniProt ID
Human	572	Q92934
Mouse	12015	Q61337
Rat	64639	O35147

Cellular Localization	Cytoplasm
Tissue specificity	Expressed in a wide variety of tissues.

Validation Data



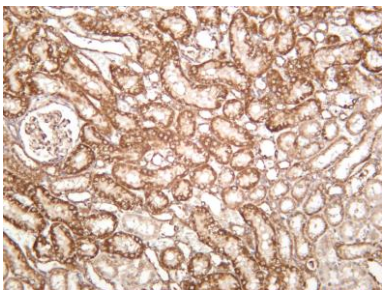
Various whole cell lysates were separated by 4-20% SDS-PAGE, and the membrane was blotted with anti-Bad antibody. The HRP-conjugated Goat anti-Rabbit IgG(H + L) antibody was used to detect the antibody.

Lane 1: HeLa

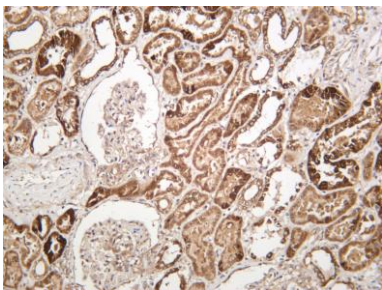
Lane 2: HepG2

Predicted band size: 18kDa

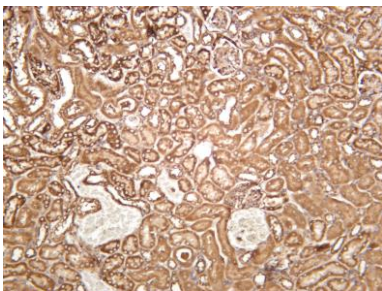
Observed band size: 23kDa



Rat kidney was stained with anti-Bad rabbit antibody



Human kidney was stained with anti-Bad rabbit antibody



Mouse kidney was stained with anti-Bad rabbit antibody

For Research Use Only