

PCNA Rabbit mAb (AR1141)

Key Features

Host Species:	Rabbit
Reactivity:	Human,Mouse,Rat
Applications:	WB,IHC,IF,IP,ELISA
Isotype:	IgG,Kappa
MW:	29kD (Calculated) 36kD (Observed)

Recommended Dilution Ratios

IHC:	1:1000-1000
WB:	1:1000-5000
IF:	1:200-1000
ELISA:	1:5000-20000
IP:	1:50-200

Storage -15°C to -25°C/1 year (Do not lower than -25°C)

Basic Information

Clonality Monoclonal

Immunogen Information

Specificity Endogenous

Target Information

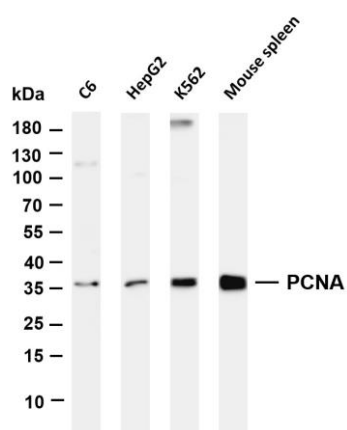
Gene name PCNA ATLD2
 Protein Name PCNA

Organism	Gene ID	UniProt ID
Human	5111	P12004
Mouse		P17918
Rat		P04961

Cellular Localization Nucleus

Tissue specificity Tonsil/ Colon

Validation Data



Various whole cell lysates were separated by 4-20% SDS-PAGE, and the membrane was blotted with anti-PCNA antibody. The HRP-conjugated Goat anti-Rabbit IgG(H + L) antibody was used to detect the antibody.

Lane 1: C6

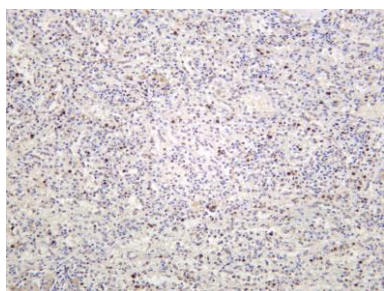
Lane 2: HepG2

Lane 3: K562

Lane 4: Mouse spleen

Predicted band size: 29kDa

Observed band size: 36kDa



Human spleen was stained with anti-PCNA rabbit antibody



Mouse thymus was stained with anti-PCNA Rabbit antibody

For Research Use Only