

CDK2 Rabbit mAb (AR1142)

Key Features

Host Species:	Rabbit
Reactivity:	Human, Mouse, Rat
Applications:	WB, IHC, IF, IP, ELISA
Isotype:	IgG, Kappa
MW:	34kD (Calculated) 34kD (Observed)

Recommended Dilution Ratios

IHC:	1:1000-4000
WB:	1:1000-5000
IF:	1:200-1000
ELISA:	1:5000-20000
IP:	1:50-200

Storage

-15°C to -25°C/1 year (Do not lower than -25°C)

Basic Information

Clonality	Monoclonal
-----------	------------

Immunogen Information

Specificity	Endogenous
-------------	------------

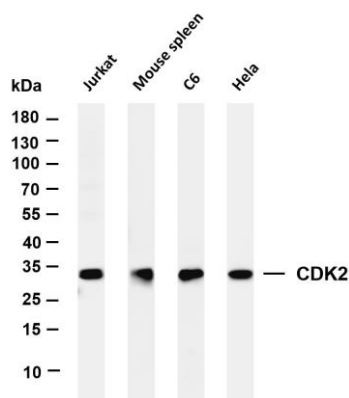
Target Information

Gene name	CDK2 CDKN2
Protein Name	CDK2

Organism	Gene ID	UniProt ID
Human	1017	P24941
Mouse	12566	P97377
Rat		Q63699

Cellular Localization	Cytoplasm
Tissue specificity	Epithelium, Lung, Placenta

Validation Data



Various whole cell lysates were separated by 4-20% SDS-PAGE, and the membrane was blotted with anti-CDK2 antibody. The HRP-conjugated Goat anti-Rabbit IgG(H + L) antibody was used to detect the antibody.

Lane 1: Jurkat

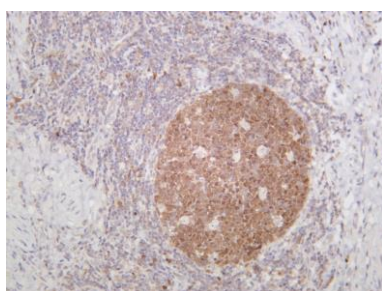
Lane 2: Mouse spleen

Lane 3: C6

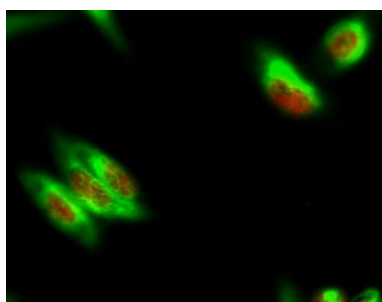
Lane 4: HeLa

Predicted band size: 34kDa

Observed band size: 34kDa

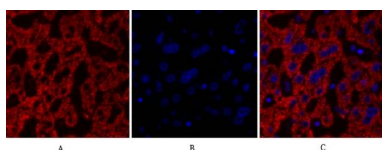


Human tonsil was stained with anti-CDK2 rabbit antibody



Immunofluorescence analysis of HeLa cell.

1. Cdk2 Antibody(red) was diluted at 1:200(4° overnight). NSE Monoclonal Antibody(13E2) (green) was diluted at 1:200(4° overnight).
2. Goat Anti Rabbit Alexa Fluor 594 was diluted at 1:1000(room temperature, 50min). Goat Anti Mouse Alexa Fluor 488 was diluted at 1:1000(room temperature, 50min).



Immunofluorescence analysis of human-liver tissue.

1. Cdk2 Antibody(red) was diluted at 1:200(4°C, overnight).
2. Cy3 labeled Secondary antibody was diluted at 1:300(room temperature, 50min).
3. DAPI (blue) 10min.

Picture A: Target. Picture B: DAPI. Picture C: merge of A+B

For Research Use Only