

Adiponectin Rabbit mAb (AR1145)

Key Features

Host Species:	Rabbit
Reactivity:	Human,Mouse,Rat
Applications:	WB,IHC,IF,IP,ELISA
Isotype:	IgG,Kappa
MW:	26kD (Calculated) 30kD (Observed)

Recommended Dilution Ratios

IHC:	1:1000-4000
WB:	1:1000-5000
IF:	1:200-1000
ELISA:	1:5000-20000
IP:	1:50-200

Storage -15°C to -25°C/1 year (Do not lower than -25°C)

Basic Information

Clonality Monoclonal

Immunogen Information

Specificity Endogenous

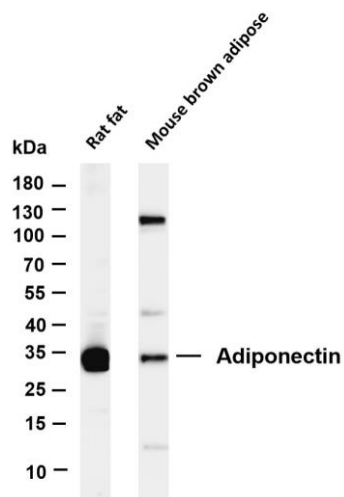
Target Information

Gene name ADIPOQ
Protein Name ADP/Acrp30(Adiponectin)

Organism	Gene ID	UniProt ID
Human	9370	Q15848
Mouse	11450	Q60994

Cellular Localization Secreted
Tissue specificity Synthesized exclusively by adipocytes and secreted into plasma.

Validation Data



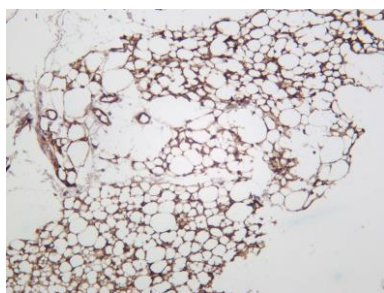
Various whole cell lysates were separated by 4-20% SDS-PAGE, and the membrane was blotted with anti-Adiponectin antibody. The HRP-conjugated Goat anti-Rabbit IgG(H + L) antibody was used to detect the antibody.

Lane 1: Rat fat

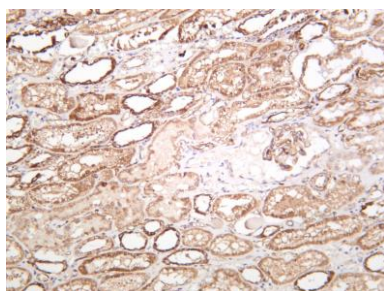
Lane 2: Mouse brown adipose

Predicted band size: 26kDa

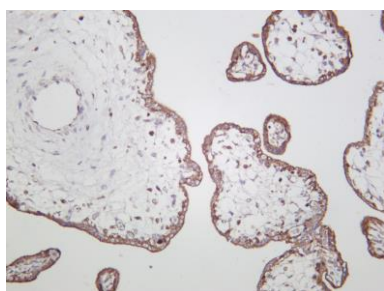
Observed band size: 30kDa



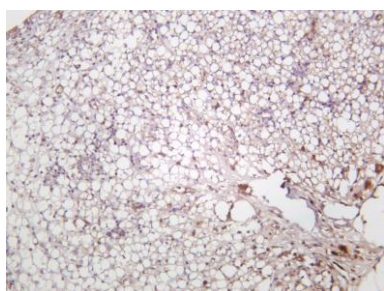
Rat adipose was stained with anti-Adiponectin rabbit antibody



Human kidney was stained with anti-Adiponectin rabbit antibody



Human placenta was stained with anti-Adiponectin rabbit antibody



Mouse adipose was stained with anti-Adiponectin rabbit antibody