

GAPDH Rabbit mAb (AR1147)

Key Features

| | |
|---------------|--|
| Host Species: | Rabbit |
| Reactivity: | Human, Mouse, Rat, Rabbit, Dog, Monkey |
| Applications: | WB, ELISA |
| Isotype: | IgG, Kappa |
| MW: | 36kD (Calculated) 38kD (Observed) |

Recommended Dilution Ratios

| | |
|--------|------------|
| WB: | 1:500-5000 |
| ELISA: | 1:20000 |

Storage

-15°C to -25°C/1 year (Do not lower than -25°C)

Basic Information

| | |
|-----------|------------|
| Clonality | Monoclonal |
|-----------|------------|

Immunogen Information

| | |
|-------------|------------|
| Specificity | Endogenous |
|-------------|------------|

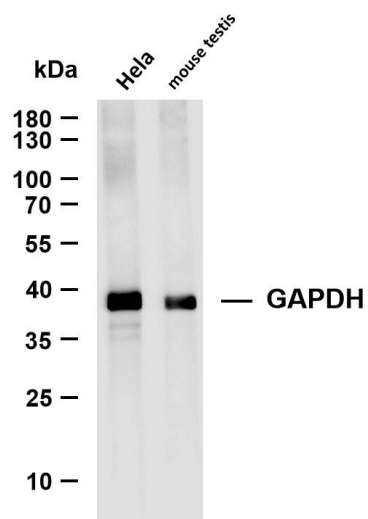
Target Information

| | |
|--------------|--|
| Gene name | GAPDH |
| Protein Name | Glyceraldehyde-3-phosphate dehydrogenase |

| Organism | Gene ID | UniProt ID |
|----------|---------|------------|
| Human | 2597 | P04406 |
| Mouse | | P16858 |

| | |
|-----------------------|---|
| Cellular Localization | Cytoplasm, cytosol. Nucleus. Cytoplasm, perinuclear region. Membrane. Cytoplasm, cytoskeleton. Translocates to the nucleus following S-nitrosylation and interaction with SIAH1, which contains a nuclear localization signal (By similarity). Postnuclear and Perinuclear regions. |
| Tissue specificity | Astrocytoma, Brain, Cajal-Retzius cell, Colon adenocarcinoma, Epithelium |

Validation Data



Various whole cell lysates were separated by 4-20% SDS-PAGE, and the membrane was blotted with anti-GAPDH antibody. The HRP-conjugated Goat anti-Rabbit IgG(H + L) antibody was used to detect the antibody.

Lane 1: HeLa

Lane 2: mouse testis

Predicted band size: 36kDa

Observed band size: 38kDa

For Research Use Only