

SOD2 Rabbit mAb (AR1150)

Key Features

Host Species:	Rabbit
Reactivity:	Human, Mouse, Rat
Applications:	WB, IHC, IF, IP, ELISA
Isotype:	IgG, Kappa
MW:	25kD (Calculated) 22kD (Observed)

Recommended Dilution Ratios

IHC:	1:200-1000
WB:	1:1000-5000
IF:	1:200-1000
ELISA:	1:5000-20000
IP:	1:50-200

Storage

-15°C to -25°C/1 year (Do not lower than -25°C)

Basic Information

Clonality	Monoclonal
-----------	------------

Immunogen Information

Specificity	Endogenous
-------------	------------

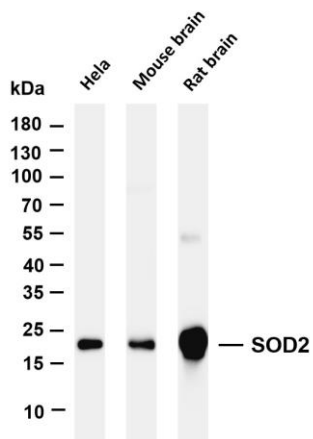
Target Information

Gene name	SOD2
Protein Name	Superoxide dismutase [Mn] mitochondrial

Organism	Gene ID	UniProt ID
Human	6648	P04179
Mouse	20656	P09671
Rat	24787	P07895

Cellular Localization	Mitochondrion matrix
Tissue specificity	Brain, Colon, Heart, Liver, Lung, Mammary carcinoma, Tongue

Validation Data



Various whole cell lysates were separated by 4-20% SDS-PAGE, and the membrane was blotted with anti-SOD2 antibody. The HRP-conjugated Goat anti-Rabbit IgG(H + L) antibody was used to detect the antibody.

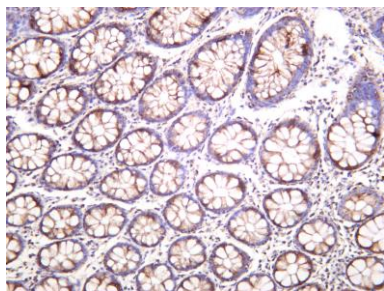
Lane 1: HeLa

Lane 2: Mouse brain

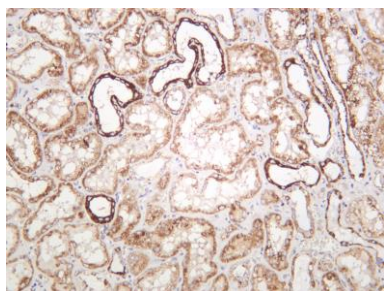
Lane 3: Rat brain

Predicted band size: 25kDa

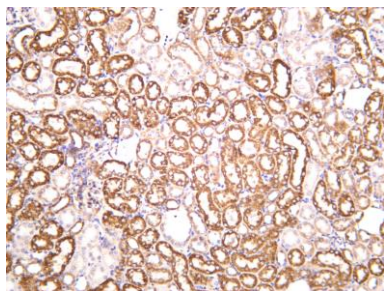
Observed band size: 22kDa



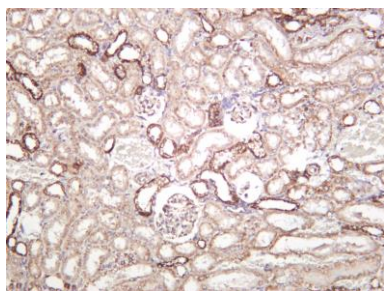
Human colon was stained with anti-SOD2 rabbit antibody



Human kidney was stained with anti-SOD2 rabbit antibody



Mouse kidney was stained with anti-SOD2 rabbit antibody



Rat kidney was stained with anti-SOD2 rabbit antibody