

Nucleolin Rabbit mAb (AR1151)

Key Features

Host Species:	Rabbit
Reactivity:	Human, Mouse
Applications:	WB, IHC, IF, IP, ELISA
Isotype:	IgG, Kappa
MW:	77kD (Calculated) 110kD (Observed)

Recommended Dilution Ratios

IHC:	1:200-1000
WB:	1:500-2000
IF:	1:200-1000
ELISA:	1:5000-20000
IP:	1:50-200

Storage

-15°C to -25°C/1 year (Do not lower than -25°C)

Basic Information

Clonality	Monoclonal
-----------	------------

Immunogen Information

Specificity	Endogenous
-------------	------------

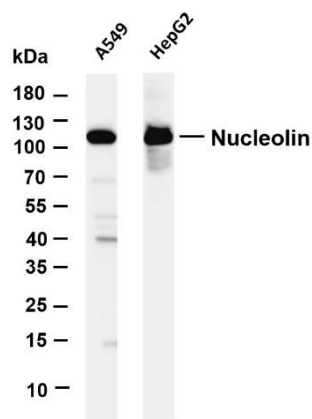
Target Information

Gene name	NCL
Protein Name	Nucleolin (Protein C23)

Organism	Gene ID	UniProt ID
Human	4691	P19338
Mouse		P09405
Rat		P13383

Cellular Localization	Nucleus
Tissue specificity	Brain, Cervix carcinoma, Epithelium, Hair follicle dermal papilla, Muscle, Retina

Validation Data



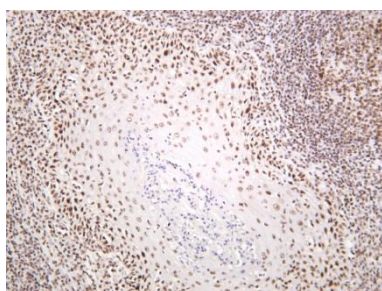
Various whole cell lysates were separated by 4-20% SDS-PAGE, and the membrane was blotted with anti-Nucleolin antibody. The HRP-conjugated Goat anti-Rabbit IgG(H + L) antibody was used to detect the antibody.

Lane 1: A549

Lane 2: HepG2

Predicted band size: 77kDa

Observed band size: 110kDa



Human tonsil was stained with anti-Nucleolin rabbit antibody

For Research Use Only