

## LAMP1 Rabbit mAb (AR1152)

### Key Features

Host Species:	Rabbit
Reactivity:	Human
Applications:	WB,IHC,IF,IP,ELISA
Isotype:	IgG,Kappa
MW:	45kD (Calculated) 100kD (Observed)

### Recommended Dilution Ratios

IHC:	1:200-1000
WB:	1:1000-5000
IF:	1:200-1000
ELISA:	1:5000-20000
IP:	1:50-200

### Storage

-15°C to -25°C/1 year (Do not lower than -25°C)

### Basic Information

Clonality	Monoclonal
-----------	------------

### Immunogen Information

Specificity	Endogenous
-------------	------------

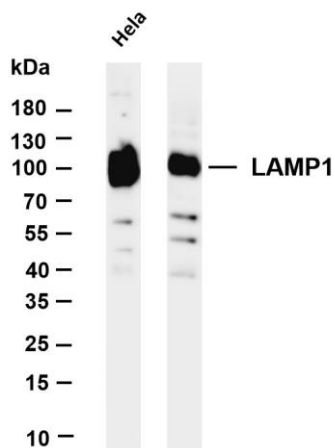
### Target Information

Gene name	LAMP1
Protein Name	Lysosome-associated membrane glycoprotein 1

Organism	Gene ID	UniProt ID
Human	3916	P11279
Mouse		P11438
Rat	25328	P14562

Cellular Localization	Membrane
Tissue specificity	Brain, Liver, Pancreas, Placenta, Plasma, Testis

## Validation Data



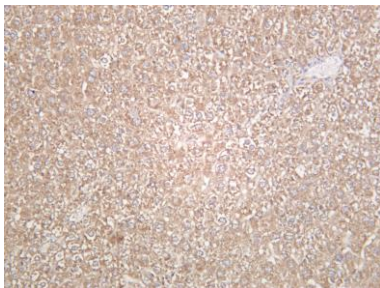
Various whole cell lysates were separated by 4-20% SDS-PAGE, and the membrane was blotted with anti-LAMP1 antibody. The HRP-conjugated Goat anti-Rabbit IgG(H + L) antibody was used to detect the antibody.

Lane 1: HeLa

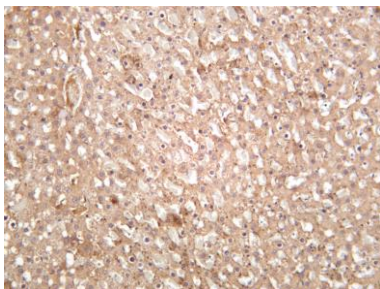
Lane 2: Jurkat

Predicted band size: 45kDa

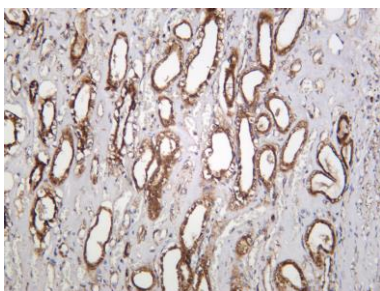
Observed band size: 100kDa



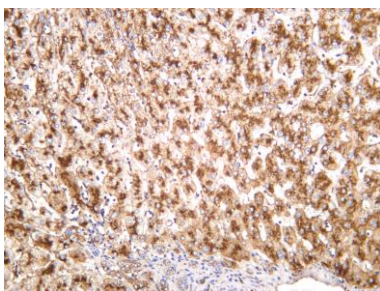
Mouse liver was stained with anti-LAMP1 rabbit antibody



Rat liver was stained with anti-LAMP1 rabbit antibody



Human kidney was stained with anti-LAMP1 rabbit antibody



Human liver was stained with anti-LAMP1 rabbit antibody