

CHOP Rabbit mAb (AR1153)

Key Features

Host Species:	Rabbit
Reactivity:	Human, Mouse, Rat
Applications:	WB, IHC, IF, IP, ELISA
Isotype:	IgG, Kappa
MW:	19kD (Calculated) 30kD (Observed)

Recommended Dilution Ratios

IHC:	1:1000-4000
WB:	1:1000-5000
IF:	1:200-1000
ELISA:	1:5000-20000
IP:	1:50-200

Storage

-15°C to -25°C/1 year (Do not lower than -25°C)

Basic Information

Clonality	Monoclonal
-----------	------------

Immunogen Information

Specificity	Endogenous
-------------	------------

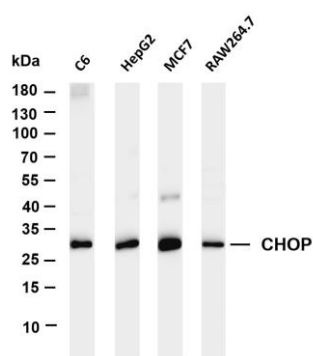
Target Information

Gene name	DDIT3 CHOP
Protein Name	DDIT3

Organism	Gene ID	UniProt ID
Human	1649	P35638
Mouse		P35639
Rat		Q62857

Cellular Localization	Cytoplasm, Nucleus
Tissue specificity	Muscle, Skeletal muscle

Validation Data



Various whole cell lysates were separated by 4-20% SDS-PAGE, and the membrane was blotted with anti-CHOP antibody. The HRP-conjugated Goat anti-Rabbit IgG(H + L) antibody was used to detect the antibody.

Lane 1: C6

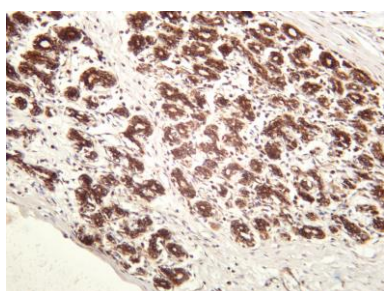
Lane 2: HepG2

Lane 3: MCF7

Lane 4: RAW264.7

Predicted band size: 19kDa

Observed band size: 30kDa



Human breast carcinoma was stained with anti-CHOP rabbit antibody

For Research Use Only