

## SOD1 Rabbit mAb (AR1154)

### Key Features

Host Species:	Rabbit
Reactivity:	Human, Mouse, Rat
Applications:	WB, IHC, IF, IP, ELISA
Isotype:	IgG, Kappa
MW:	16kD (Calculated) 16kD (Observed)

### Recommended Dilution Ratios

IHC:	1:100-5000
WB:	1:2000-10000
IF:	1:200-1000
ELISA:	1:5000-20000
IP:	1:50-200

### Storage

-15°C to -25°C/1 year (Do not lower than -25°C)

### Basic Information

Clonality	Monoclonal
-----------	------------

### Immunogen Information

Specificity	Endogenous
-------------	------------

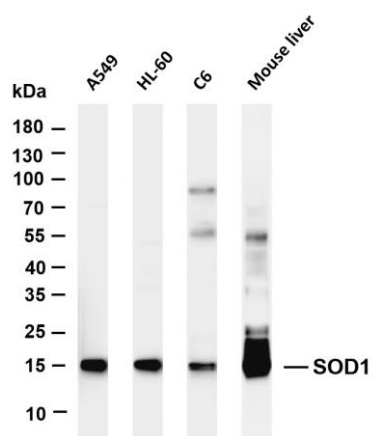
### Target Information

Gene name	SOD1
Protein Name	Superoxide dismutase [Cu-Zn]

Organism	Gene ID	UniProt ID
Human	6647	P00441
Mouse	20655	P08228
Rat	24786	P07632

Cellular Localization	Cytoplasm, Nucleus
Tissue specificity	Colon, Fetal brain cortex, Placenta

## Validation Data



Various whole cell lysates were separated by 4-20% SDS-PAGE, and the membrane was blotted with anti-SOD1 antibody. The HRP-conjugated Goat anti-Rabbit IgG(H + L) antibody was used to detect the antibody.

Lane 1: A549

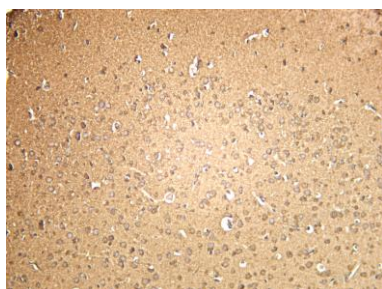
Lane 2: HL-60

Lane 3: C6

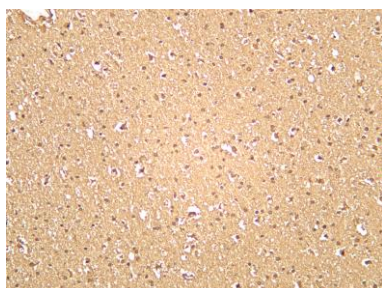
Lane 4: Mouse liver

Predicted band size: 16kDa

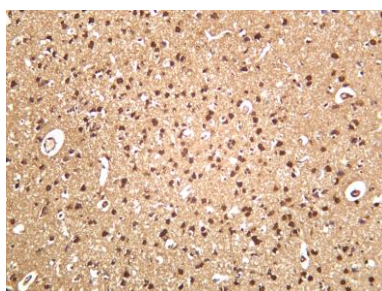
Observed band size: 16kDa



Mouse brain was stained with anti-SOD1 rabbit antibody



Human brain was stained with anti-SOD1 rabbit antibody



Rat brain was stained with anti-SOD1 rabbit antibody

For Research Use Only