

BRG1 Rabbit mAb (AR1156)

Key Features

Host Species:	Rabbit
Reactivity:	Human,Rat
Applications:	WB,IHC,IF,IP,ELISA
Isotype:	IgG,Kappa
MW:	185kD (Calculated) 220kD (Observed)

Recommended Dilution Ratios

IHC:	1:200-1000
WB:	1:2000-10000
IF:	1:200-1000
ELISA:	1:5000-20000
IP:	1:50-200

Storage

-15°C to -25°C/1 year (Do not lower than -25°C)

Basic Information

Clonality	Monoclonal
-----------	------------

Immunogen Information

Specificity	Endogenous
-------------	------------

Target Information

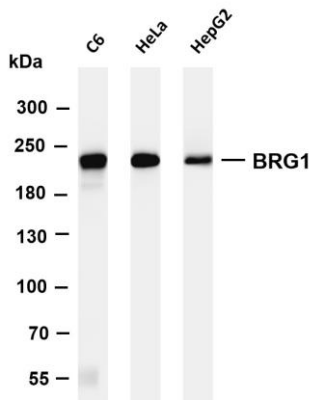
Gene name	SMARCA4
Protein Name	Transcription activator BRG1

Organism	Gene ID	UniProt ID
Human	6597	P51532
Mouse	20586	Q3TKT4
Rat		Q8K1P7

Cellular Localization	Nucleus
Tissue specificity	Colocalizes with ZEB1 in E-cadherin-negative cells from established lines, and stroma of normal colon as well as in de-differentiated

epithelial cells at the invasion front of colorectal carcinomas (at protein level).

Validation Data



Various whole cell lysates were separated by 4-8% SDS-PAGE, and the membrane was blotted with anti-BRG1 antibody. The HRP-conjugated Goat anti-Rabbit IgG(H + L) antibody was used to detect the antibody.

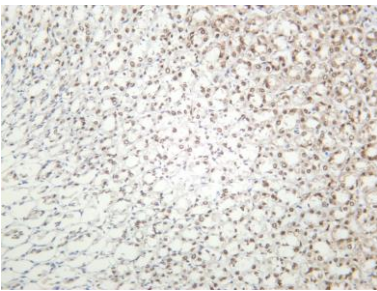
Lane 1: C6

Lane 2: HeLa

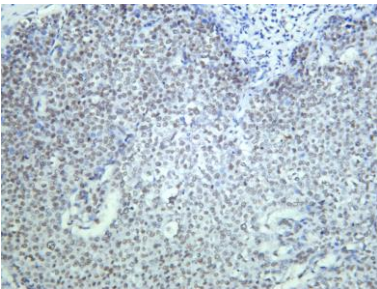
Lane 3: HepG2

Predicted band size: 185kDa

Observed band size: 220kDa



Rat stomach was stained with anti-BRG1 rabbit antibody



Human breast carcinoma was stained with anti-BRG1 Rabbit antibody

For Research Use Only