

## Albumin Rabbit mAb (AR1301)

### Key Features

Host Species:	Rabbit
Reactivity:	Human, Mouse, Rat
Applications:	WB, IHC, IF, IP, ELISA
Isotype:	IgG, Kappa
MW:	69kD (Calculated) 69kD (Observed)

### Recommended Dilution Ratios

IHC:	1:500-2000
WB:	1:2000-10000
IF:	1:200-1000
ELISA:	1:5000-20000
IP:	1:50-200

### Storage

-15°C to -25°C/1 year (Do not lower than -25°C)

### Basic Information

Clonality	Monoclonal
-----------	------------

### Immunogen Information

Specificity	Endogenous
-------------	------------

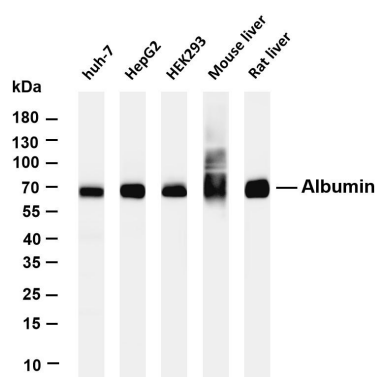
### Target Information

Gene name	ALB
Protein Name	ALB(Albumin)

Organism	Gene ID	UniProt ID
Human	213	P02768
Mouse		P07724
Rat		P02770

Cellular Localization	Secreted
Tissue specificity	Plasma

## Validation Data



Various whole cell lysates were separated by 4-20% SDS-PAGE, and the membrane was blotted with anti-Albumin antibody. The HRP-conjugated Goat anti-Rabbit IgG(H + L) antibody was used to detect the antibody.

Lane 1: huh-7

Lane 2: HepG2

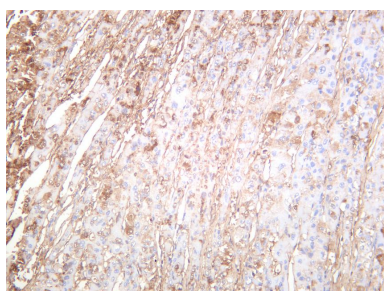
Lane 3: HEK293

Lane 4: Mouse liver

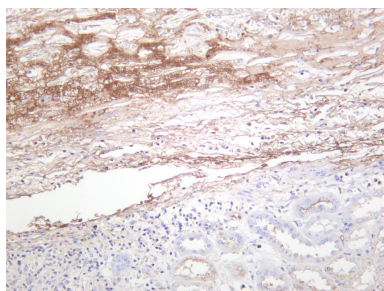
Lane 5: Rat liver

Predicted band size: 69kDa

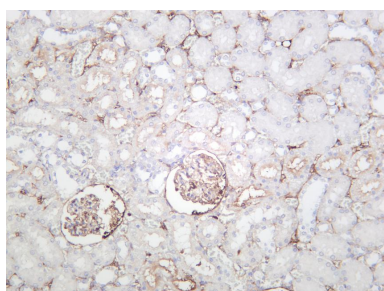
Observed band size: 69kDa



Human hepatocellular carcinoma was stained with anti-Albumin rabbit antibody



Human kidney was stained with anti-Albumin rabbit antibody



Rat kidney was stained with anti-Albumin rabbit antibody

For Research Use Only