

## ALK Rabbit mAb (AR1302)

### Key Features

Host Species:	Rabbit
Reactivity:	Human
Applications:	WB,IHC,IF,IP,ELISA
Isotype:	IgG,Kappa
MW:	176kD (Calculated) 220kD (Observed)

### Recommended Dilution Ratios

IHC:	1:200-1000
WB:	1:2000-10000
IF:	1:200-1000
ELISA:	1:5000-20000
IP:	1:50-200

### Storage

-15°C to -25°C/1 year (Do not lower than -25°C)

### Basic Information

Clonality	Monoclonal
-----------	------------

### Immunogen Information

Specificity	Endogenous
-------------	------------

### Target Information

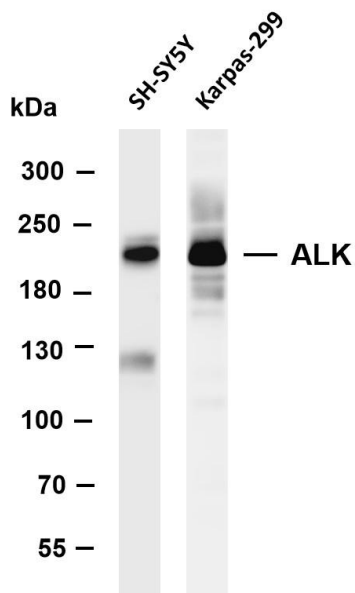
Gene name	ALK
Protein Name	ALK tyrosine kinase receptor

Organism	Gene ID	UniProt ID
Human	238	Q9UM73
Mouse	11682	P97793

Cellular Localization	Cell membrane; Single-pass type I membrane protein. Membrane attachment is essential for promotion of neuron-like differentiation and cell proliferation arrest through specific activation of the MAP kinase pathway
Tissue specificity	Expressed in brain and CNS. Also expressed in the small intestine

and testis, but not in normal lymphoid cells.

## Validation Data



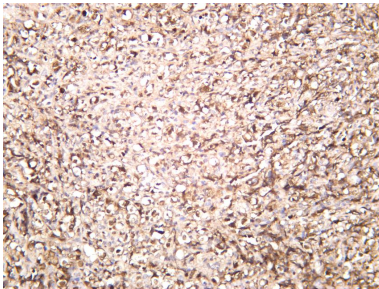
Various whole cell lysates were separated by 4-8% SDS-PAGE, and the membrane was blotted with anti-ALK antibody. The HRP-conjugated Goat anti-Rabbit IgG(H + L) antibody was used to detect the antibody.

Lane 1: SH SY5Y

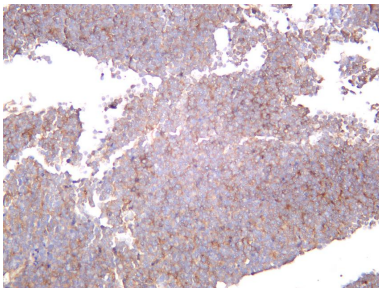
Lane 2: Karpas-299

Predicted band size: 176kDa

Observed band size: 220kDa



Human non-hodgkin lymphoma was stained with anti-ALK rabbit antibody



Human neuroblastoma was stained with anti-ALK rabbit antibody

For Research Use Only