

## ASK1 Rabbit mAb (AR1034)

### Key Features

Host Species:	Rabbit
Reactivity:	Human, Mouse
Applications:	WB, IHC, IF, IP, ELISA
Isotype:	IgG, Kappa
MW:	155kD (Calculated) 155kD (Observed)

### Recommended Dilution Ratios

IHC:	1:100-400
WB:	1:1000-5000
IF:	1:200-1000
ELISA:	1:5000-20000
IP:	1:50-200

### Storage

-15°C to -25°C/1 year (Do not lower than -25°C)

### Basic Information

Clonality	Monoclonal
-----------	------------

### Immunogen Information

Specificity	Endogenous
-------------	------------

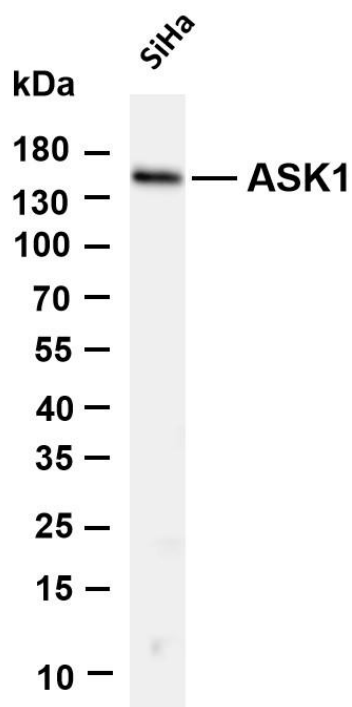
### Target Information

Gene name	MAP3K5
Protein Name	Mitogen-activated protein kinase 5

Organism	Gene ID	UniProt ID
Human	4217	Q99683
Mouse	26408	O35099

Cellular Localization	Cytoplasm
Tissue specificity	Abundantly expressed in heart and pancreas.

## Validation Data

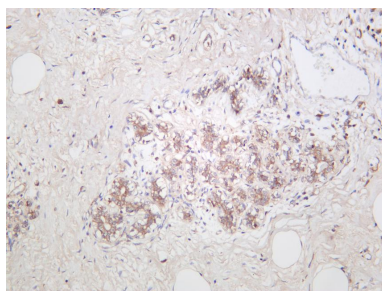


Various whole cell lysates were separated by 4-20% SDS-PAGE, and the membrane was blotted with anti-ASK1 antibody. The HRP-conjugated Goat anti-Rabbit IgG(H + L) antibody was used to detect the antibody.

Lane 1: SiHa

Predicted band size: 155kDa

Observed band size: 155kDa



Human breast carcinoma was stained with anti-ASK1 rabbit antibody

For Research Use Only