

Androgen Receptor Rabbit mAb (AR1303)

Key Features

Host Species:	Rabbit
Reactivity:	Human,Mouse,Rat
Applications:	WB,IHC,IF,IP,ELISA
Isotype:	IgG,Kappa
MW:	99kD (Calculated) 110kD (Observed)

Recommended Dilution Ratios

IHC:	1:200-1000
WB:	1:2000-10000
IF:	1:200-1000
ELISA:	1:5000-20000
IP:	1:50-200

Storage

-15°C to -25°C/1 year (Do not lower than -25°C)

Basic Information

Clonality	Monoclonal
-----------	------------

Immunogen Information

Specificity	Endogenous
-------------	------------

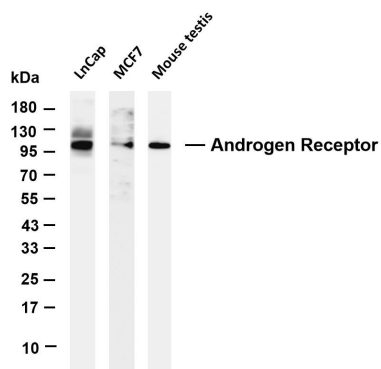
Target Information

Gene name	AR DHTR NR3C4
Protein Name	AR

Organism	Gene ID	UniProt ID
Human	367	P10275

Cellular Localization	Nuclear
Tissue specificity	[Isoform 2]: Mainly expressed in heart and skeletal muscle; [Isoform 3]: Expressed in basal and stromal cells of the prostate (at protein level).

Validation Data



Various whole cell lysates were separated by 4-20% SDS-PAGE, and the membrane was blotted with anti-Androgen Receptor antibody. The HRP conjugated Goat anti-Rabbit IgG(H + L) antibody was used to detect the antibody.

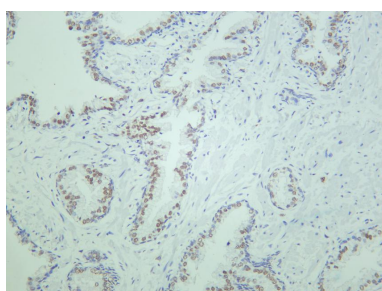
Lane 1: LnCap

Lane 2: MCF7

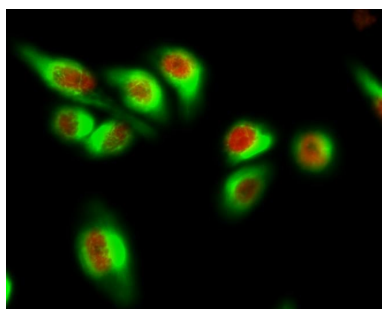
Lane 3: mouse testis

Predicted band size: 99kDa

Observed band size: 110kDa

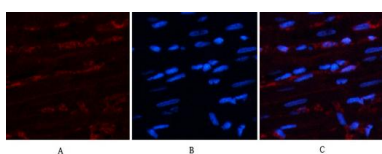


Human prostate carcinoma was stained with anti-Androgen Receptor rabbit antibody



Immunofluorescence analysis of HeLa cell.

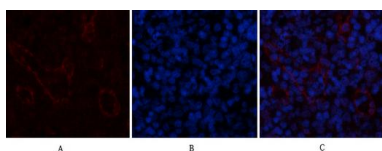
1. AR Monoclonal Antibody(red) was diluted at 1:200(4° overnight). GFAP Monoclonal Antibody(5C8)(green) was diluted at 1:200(4° overnight).
2. Goat Anti Rabbit Alexa Fluor 594 was diluted at 1:1000(room temperature, 50min). Goat Anti Mouse Alexa Fluor 488 was diluted at 1:1000(room temperature, 50min).



Immunofluorescence analysis of rat-heart tissue.

1. AR Monoclonal Antibody(red) was diluted at 1:200(4°C, overnight).
2. Cy3 labeled Secondary antibody was diluted at 1:300(room temperature, 50min).
3. DAPI (blue) 10min.

Picture A: Target. Picture B: DAPI. Picture C: merge of A+B



Immunofluorescence analysis of rat-spleen tissue.

1. AR Monoclonal Antibody(red) was diluted at 1:200(4°C, overnight).
2. Cy3 labeled Secondary antibody was diluted at 1:300(room temperature, 50min).
3. DAPI (blue) 10min.

Picture A: Target. Picture B: DAPI. Picture C: merge of A+B