

# ATP-Citrate Lyase Rabbit mAb (AR1305)

## Key Features

|               |  |
|---------------|--|
| Host Species: | Rabbit                                 |
| Reactivity:   | Human, Mouse, Rat                      |
| Applications: | WB, IHC, IF, IP, ELISA                 |
| Isotype:      | IgG, Kappa                             |
| MW:           | 121kD (Calculated)<br>121kD (Observed) |

## Recommended Dilution Ratios

|        |              |
|--------|--------------|
| IHC:   | 1:2000-10000 |
| WB:    | 1:2000-10000 |
| IF:    | 1:200-1000   |
| ELISA: | 1:5000-20000 |
| IP:    | 1:50-200     |

## Storage

-15°C to -25°C/1 year (Do not lower than -25°C)

## Basic Information

|           |            |
|-----------|------------|
| Clonality | Monoclonal |
|-----------|------------|

## Immunogen Information

|             |            |
|-------------|------------|
| Specificity | Endogenous |
|-------------|------------|

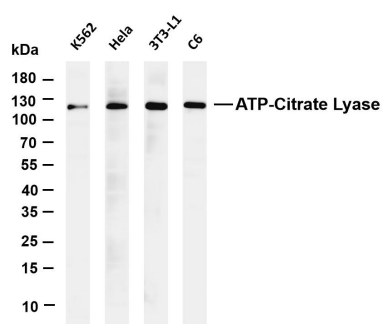
## Target Information

|              |                      |
|--------------|----------------------|
| Gene name    | ACLY                 |
| Protein Name | ATP-citrate synthase |

| Organism | Gene ID | UniProt ID |
|----------|---------|------------|
| Human    | 47      | P53396     |
| Mouse    | 104112  | Q91V92     |
| Rat      | 24159   | P16638     |

|                       |  |
|-----------------------|--|
| Cellular Localization | Cytoplasm  |
| Tissue specificity    | Brain, Epithelium, Hippocampus, Liver, Lymph, Platelet |

## Validation Data



Various whole cell lysates were separated by 4-20% SDS-PAGE, and the membrane was blotted with anti-ATP-Citrate Lyase antibody. The HRP conjugated Goat anti-Rabbit IgG(H + L) antibody was used to detect the antibody.

Lane 1: K562

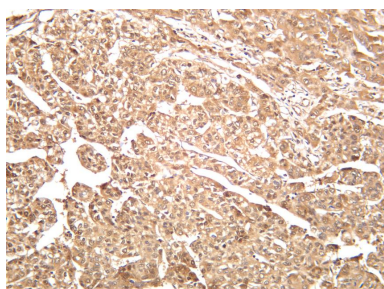
Lane 2: HeLa

Lane 3: 3T3-L1

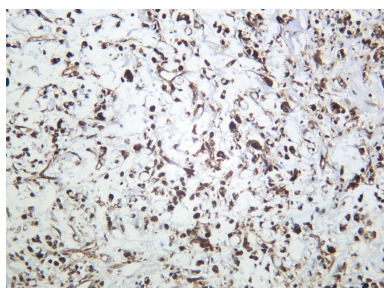
Lane 4: C6

Predicted band size: 121kDa

Observed band size: 121kDa



Human hepatocellular carcinoma was stained with anti-ATP-Citrate Lyase rabbit antibody



Human gastric carcinoma was stained with anti-ATP-Citrate Lyase Rabbit antibody

For Research Use Only