

UBA52 Rabbit mAb (AR1308)

Key Features

Host Species:	Rabbit
Reactivity:	Human, Mouse, Rat
Applications:	WB, IHC, IF, IP, ELISA
Isotype:	IgG, Kappa
MW:	15kD (Calculated) 10kD (Observed)

Recommended Dilution Ratios

IHC:	1:2000-10000
WB:	1:2000-10000
IF:	1:200-1000
ELISA:	1:5000-20000
IP:	1:50-200

Storage

-15°C to -25°C/1 year (Do not lower than -25°C)

Basic Information

Clonality	Monoclonal
-----------	------------

Immunogen Information

Specificity	Endogenous
-------------	------------

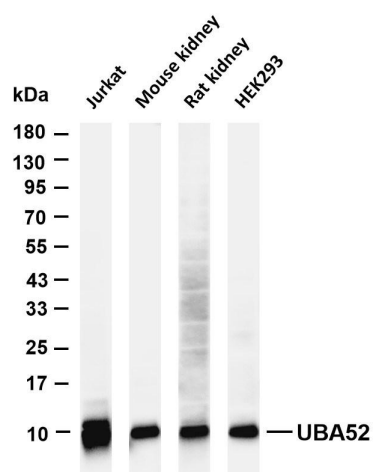
Target Information

Gene name	UBA52
Protein Name	Ubiquitin-60S ribosomal protein L40

Organism	Gene ID	UniProt ID
Human	7311	P62987
Mouse	22186	P62984
Rat	64156	P62986

Cellular Localization	[Ubiquitin]: Cytoplasm. Nucleus; [60S ribosomal protein L40]: Cytoplasm
Tissue specificity	Brain, Epithelium, Fetal brain cortex, Liver

Validation Data



Various whole cell lysates were separated by 4-20% SDS-PAGE, and the membrane was blotted with anti-UBA52 antibody. The HRP-conjugated Goat anti-Rabbit IgG(H + L) antibody was used to detect the antibody.

Lane 1: Jurkat

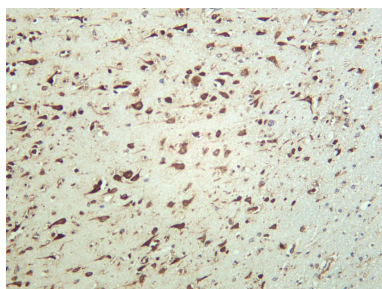
Lane 2: Mouse kidney

Lane 3: Rat kidney

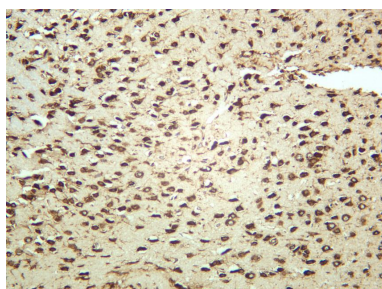
Lane 4: HEK293

Predicted band size: 15kDa

Observed band size: 10kDa



Human brain was stained with anti-UBA52 rabbit antibody



Mouse brain was stained with anti-UBA52 rabbit antibody

For Research Use Only