

Bim Rabbit mAb (AR1307)

Key Features

Host Species:	Rabbit
Reactivity:	Human, Mouse, Rat
Applications:	WB, IHC, IF, IP, ELISA
Isotype:	IgG, Kappa
MW:	22kD (Calculated) 22kD (Observed)

Recommended Dilution Ratios

IHC:	1:200-1000
WB:	1:2000-10000
IF:	1:200-1000
ELISA:	1:5000-20000
IP:	1:50-200

Storage

-15°C to -25°C/1 year (Do not lower than -25°C)

Basic Information

Clonality	Monoclonal
-----------	------------

Immunogen Information

Specificity	Endogenous
-------------	------------

Target Information

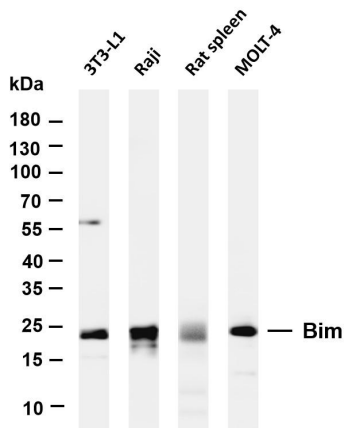
Gene name	BCL2L11
Protein Name	Bcl-2-like protein 11

Organism	Gene ID	UniProt ID
Human	10018	O43521
Mouse	12125	O54918
Rat	64547	O88498

Cellular Localization	Endomembrane
Tissue specificity	Isoform BimEL, isoform BimL and isoform BimS are the predominant isoforms and are widely expressed with tissue-

specific variation. Isoform Bim-gamma is most abundantly expressed in small intestine and colon, and in lower levels in spleen, prostate, testis, heart, liver and kidney.

Validation Data



Various whole cell lysates were separated by 4-20% SDS-PAGE, and the membrane was blotted with anti-Bim antibody. The HRP-conjugated Goat anti-Rabbit IgG(H + L) antibody was used to detect the antibody.

Lane 1: 3T3-L1

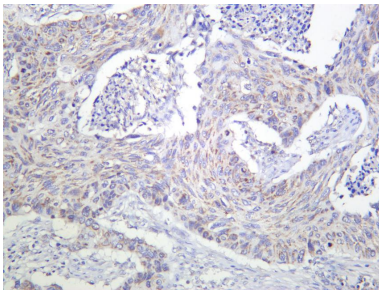
Lane 2: Raji

Lane 3: Rat spleen

Lane 4: MOLT-4

Predicted band size: 22kDa

Observed band size: 22kDa



Human lung carcinoma was stained with anti-Bim Rabbit antibody

For Research Use Only