

Caveolin-1 Rabbit mAb (AR1311)

Key Features

Host Species:	Rabbit
Reactivity:	Human, Mouse, Rat
Applications:	WB, IHC, IF, IP, ELISA
Isotype:	IgG, Kappa
MW:	20kD (Calculated) 20kD (Observed)

Recommended Dilution Ratios

IHC:	1:1000-4000
WB:	1:2000-10000
IF:	1:200-1000
ELISA:	1:5000-20000
IP:	1:50-200

Storage

-15°C to -25°C/1 year (Do not lower than -25°C)

Basic Information

Clonality	Monoclonal
-----------	------------

Immunogen Information

Specificity	Endogenous
-------------	------------

Target Information

Gene name	CAV1
-----------	------

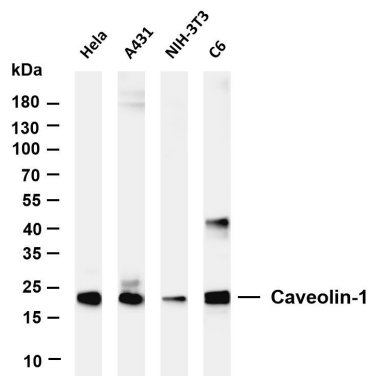
Protein Name	Caveolin-1
--------------	------------

Organism	Gene ID	UniProt ID
Human	857	Q03135
Mouse	12389	P49817
Rat		P41350

Cellular Localization	Membrane
-----------------------	----------

Tissue specificity	Skeletal muscle, liver, stomach, lung, kidney and heart (at protein level). Expressed in the brain.
--------------------	---

Validation Data



Various whole cell lysates were separated by 4-20% SDS-PAGE, and the membrane was blotted with anti-Caveolin-1 antibody. The HRP-conjugated Goat anti-Rabbit IgG(H + L) antibody was used to detect the antibody.

Lane 1: HeLa

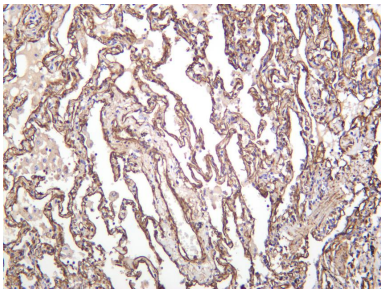
Lane 2: A431

Lane 3: NIH-3T3

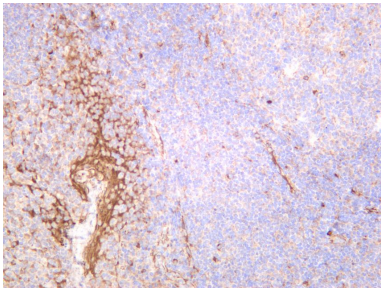
Lane 4: C6

Predicted band size: 20kDa

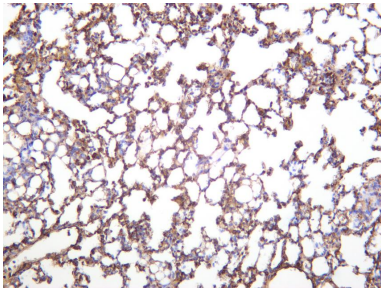
Observed band size: 20kDa



Human lung was stained with anti-Caveolin-1 rabbit antibody



Human tonsil was stained with anti-Caveolin-1 rabbit antibody



Mouse lung was stained with anti-Caveolin-1 rabbit antibody

For Research Use Only