

CD206/MRC1 Rabbit mAb (AR1312)

Key Features

Host Species:	Rabbit
Reactivity:	Human, Mouse, Rat
Applications:	WB, IHC, IF, IP, ELISA
Isotype:	IgG, Kappa
MW:	166kD (Calculated) 190kD (Observed)

Recommended Dilution Ratios

IHC:	1:200-1000
WB:	1:5000-20000
IF:	1:200-1000
ELISA:	1:5000-20000
IP:	1:50-200

Storage

-15°C to -25°C/1 year (Do not lower than -25°C)

Basic Information

Clonality	Monoclonal
-----------	------------

Immunogen Information

Specificity	Endogenous
-------------	------------

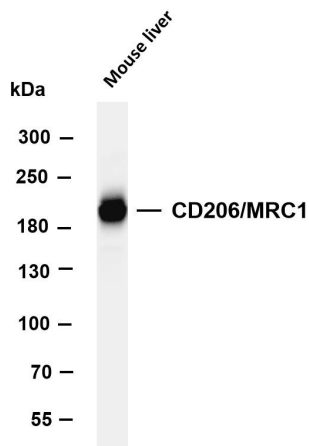
Target Information

Gene name	MRC1
Protein Name	Macrophage mannose receptor 1

Organism	Gene ID	UniProt ID
Human	4360	P22897
Mouse	17533	Q61830

Cellular Localization	Membrane
Tissue specificity	Milk, Placenta, Testis

Validation Data

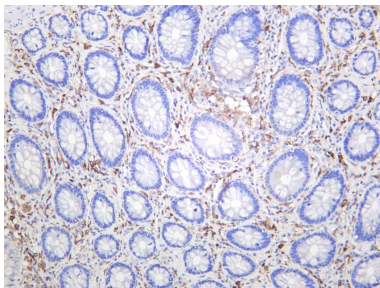


Various whole cell lysates were separated by 4-8% SDS-PAGE, and the membrane was blotted with anti-CD206/MRC1 antibody. The HRP-conjugated Goat anti-Rabbit IgG(H + L) antibody was used to detect the antibody.

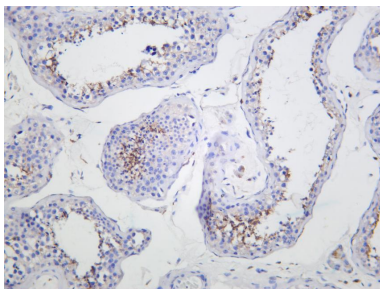
Lane 1: Mouse liver

Predicted band size: 166kDa

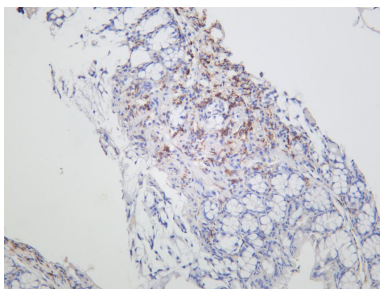
Observed band size: 190kDa



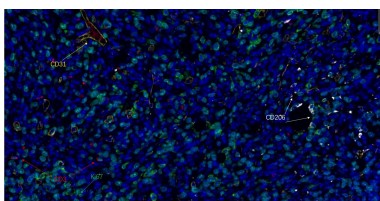
Human colon was stained with anti-CD206/MRC1 rabbit antibody



Human testis was stained with anti-CD206/MRC1 rabbit antibody



Mouse colon was stained with anti-CD206/MRC1 rabbit antibody



Fluorescence multiplex immunohistochemical analysis of human tonsil tissue (formalin-fixed paraffin-embedded section). The immunostaining was performed by Sextuple-Fluorescence kit. CD3 rabbit mAb(RED), Ki67 rabbit mAb(GREEN), CD31 rabbit mAb(YELLOW), CD206 Rabbit mAb(WHITE) was tested with different TSA Fluorescence reagent. Microscopy and pseudocoloring of individual dyes was performed using a Slideviewer Imaging System (Excilone).