

CD34 Rabbit mAb (AR1313)

Key Features

| | |
|---------------|--------------------------------------|
| Host Species: | Rabbit |
| Reactivity: | Human, Mouse, Rat |
| Applications: | WB, IHC, IF, IP, ELISA |
| Isotype: | IgG, Kappa |
| MW: | 41kD (Calculated) 80kD (Observed) |

Recommended Dilution Ratios

| | |
|--------|--------------|
| IHC: | 1:1000-5000 |
| WB: | 1:1000-5000 |
| IF: | 1:200-1000 |
| ELISA: | 1:5000-20000 |
| IP: | 1:50-200 |

Storage

-15°C to -25°C/1 year (Do not lower than -25°C)

Basic Information

| | |
|-----------|------------|
| Clonality | Monoclonal |
|-----------|------------|

Immunogen Information

| | |
|-------------|------------|
| Specificity | Endogenous |
|-------------|------------|

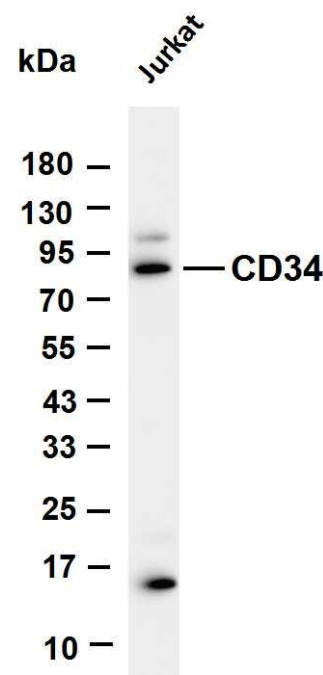
Target Information

| | |
|--------------|--|
| Gene name | CD34 |
| Protein Name | Hematopoietic progenitor cell antigen CD34 |

| Organism | Gene ID | UniProt ID |
|----------|---------|------------|
| Human | 947 | P28906 |
| Mouse | 12490 | Q64314 |

| | |
|-----------------------|---|
| Cellular Localization | Membrane; Single-pass type I membrane protein. |
| Tissue specificity | Selectively expressed on hematopoietic progenitor cells and the small vessel endothelium of a variety of tissues. |

Validation Data

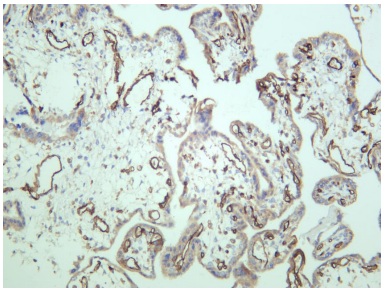


Various whole cell lysates were separated by 4-20% SDS-PAGE, and the membrane was blotted with anti-CD34 antibody. The HRP-conjugated Goat anti-Rabbit IgG(H + L) antibody was used to detect the antibody.

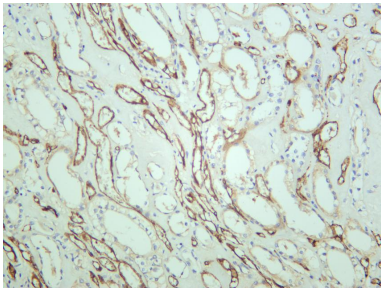
Lane 1: Jurkat

Predicted band size: 41kDa

Observed band size: 80kDa



Human placenta was stained with anti-CD34 rabbit antibody



Human kidney was stained with anti-CD34 rabbit antibody