

# Cytokeratin 20 Rabbit mAb (AR1322)

## Key Features

Host Species:	Rabbit
Reactivity:	Human,Rat
Applications:	WB,IHC,IF,IP,ELISA
Isotype:	IgG,Kappa
MW:	48kD (Calculated) 48kD (Observed)

## Recommended Dilution Ratios

IHC:	1:200-1000
WB:	1:2000-10000
IF:	1:200-1000
ELISA:	1:5000-20000
IP:	1:50-200

## Storage

-15°C to -25°C/1 year (Do not lower than -25°C)

## Basic Information

Clonality	Monoclonal
-----------	------------

## Immunogen Information

Specificity	Endogenous
-------------	------------

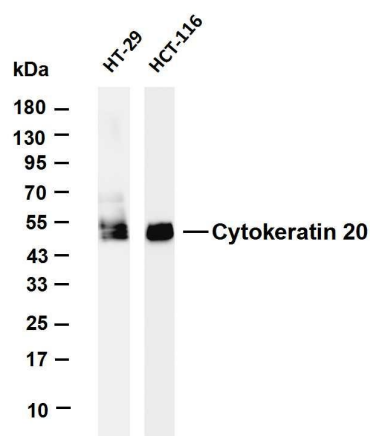
## Target Information

Gene name	KRT20
Protein Name	Cytokeratin-20

Organism	Gene ID	UniProt ID
Human	54474	P35900

Cellular Localization	Cytoplasmic, Membranous Expressed predominantly in the intestinal epithelium. Expressed in luminal cells of colonic mucosa. Also expressed in the Merkel cells of keratinized oral mucosa; specifically at the tips of some rete ridges of the gingival mucosa, in the basal layer of the palatal mucosa and in the taste buds of lingual mucosa.
Tissue specificity	

## Validation Data



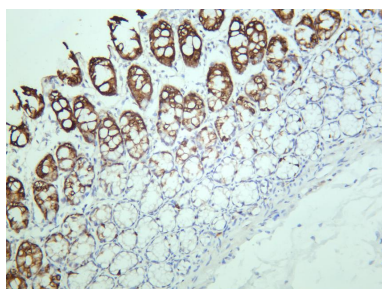
Various whole cell lysates were separated by 4-20% SDS-PAGE, and the membrane was blotted with anti-Cytokeratin 20 antibody. The HRP conjugated Goat anti-Rabbit IgG(H + L) antibody was used to detect the antibody.

Lane 1: HT-29

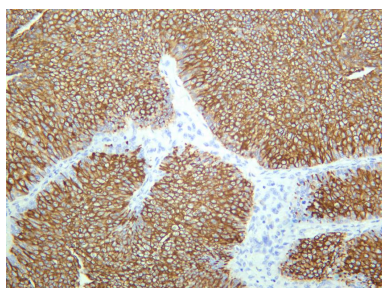
Lane 2: HCT-116

Predicted band size: 48kDa

Observed band size: 48kDa



Rat colon was stained with anti-Cytokeratin 20 rabbit antibody



Human urinary bladder transitional carcinoma was stained with anti - Cytokeratin 20 rabbit antibody

For Research Use Only