

## Estrogen Receptor $\alpha$ Rabbit mAb (AR1330)

### Key Features

|               |                                      |
|---------------|--------------------------------------|
| Host Species: | Rabbit                               |
| Reactivity:   | Human, Mouse, Rat                    |
| Applications: | WB, IHC, IF, IP, ELISA               |
| Isotype:      | IgG, Kappa                           |
| MW:           | 66kD (Calculated)<br>66kD (Observed) |

### Recommended Dilution Ratios

|        |              |
|--------|--------------|
| IHC:   | 1:200-1000   |
| WB:    | 1:2000-10000 |
| IF:    | 1:200-1000   |
| ELISA: | 1:5000-20000 |
| IP:    | 1:50-200     |

### Storage

-15°C to -25°C/1 year (Do not lower than -25°C)

### Basic Information

|           |            |
|-----------|------------|
| Clonality | Monoclonal |
|-----------|------------|

### Immunogen Information

|             |            |
|-------------|------------|
| Specificity | Endogenous |
|-------------|------------|

### Target Information

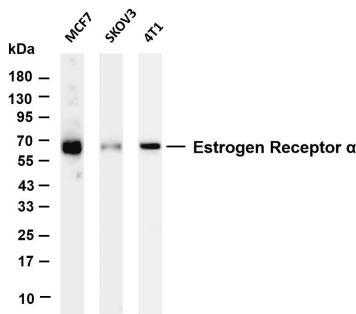
|              |  |
|--------------|--|
| Gene name    | Estrogen receptor (ER) (ER-alpha) (Estradiol receptor) (Nuclear receptor subfamily 3 group A member 1) |
| Protein Name | Estrogen receptor (ER) (ER-alpha) (Estradiol receptor) (Nuclear receptor subfamily 3 group A member 1) |

| Organism | Gene ID | UniProt ID |
|----------|---------|------------|
| Human    | 2099    | P03372     |
| Mouse    | 13982   | P19785     |
| Rat      | 24890   | P06211     |

|                       |  |
|-----------------------|--|
| Cellular Localization | Nucleus  |
| Tissue specificity    | Widely expressed (PubMed:10970861). Not expressed in the |

pituitary gland (PubMed:10970861); [Isoform 3]: Widely expressed, however not expressed in the pituitary gland.

## Validation Data



Various whole cell lysates were separated by 4-20% SDS-PAGE, and the membrane was blotted with anti- Estrogen Receptor  $\alpha$  antibody. The HRP conjugated Goat anti-Rabbit IgG(H + L) antibody was used to detect the antibody.

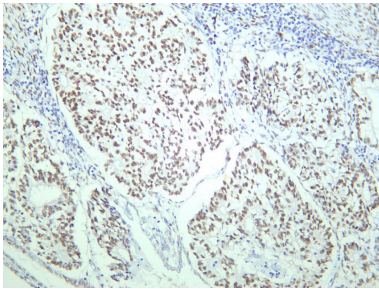
Lane 1: MCF7

Lane 2: SKOV3

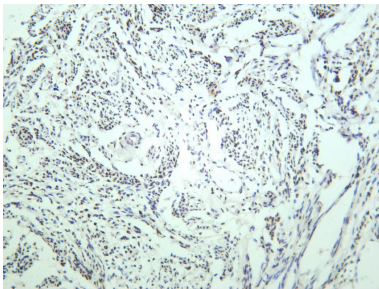
Lane 3: 4T1

Predicted band size: 66kDa

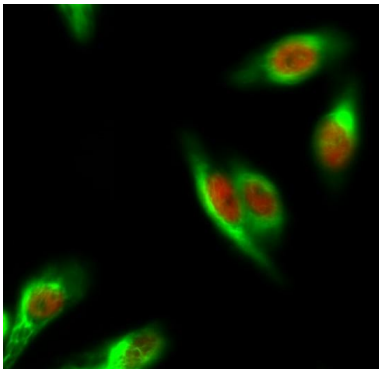
Observed band size: 66kDa



Human ovary carcinoma was stained with anti-Estrogen Receptor  $\alpha$  rabbit antibody



Human breast carcinoma was stained with anti-Estrogen Receptor  $\alpha$  rabbit antibody



Immunofluorescence analysis of Hela cell.

1. ER  $\alpha$  Monoclonal Antibody(red) was diluted at 1:200(4 ° overnight). Caspase-8 Monoclonal Antibody(2G12) (green) was diluted at 1:200(4° overnight).
2. Goat Anti Rabbit Alexa Fluor 594 was diluted at 1:1000(room temperature, 50min). Goat Anti Mouse Alexa Fluor 488 was diluted at 1:1000(room temperature, 50min).