

Fascin Rabbit mAb (AR1332)

Key Features

Host Species:	Rabbit
Reactivity:	Human, Mouse, Rat
Applications:	WB, IHC, IF, IP, ELISA
Isotype:	IgG, Kappa
MW:	55kD (Calculated) 55kD (Observed)

Recommended Dilution Ratios

IHC:	1:1000-5000
WB:	1:10000-20000
IF:	1:200-1000
ELISA:	1:5000-20000
IP:	1:50-200

Storage

-15°C to -25°C/1 year (Do not lower than -25°C)

Basic Information

Clonality	Monoclonal
-----------	------------

Immunogen Information

Specificity	Endogenous
-------------	------------

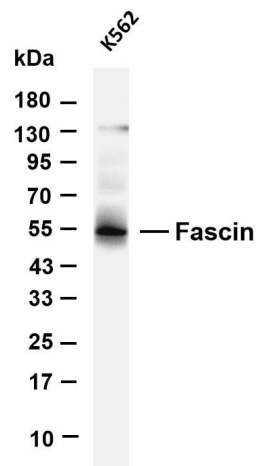
Target Information

Gene name	FSCN1 FAN1 HSN SNL
Protein Name	Fascin (55 kDa actin-bundling protein) (Singed-like protein) (p55)

Organism	Gene ID	UniProt ID
Human	6624	Q16658

Cellular Localization	Cytoplasmic
Tissue specificity	Ubiquitous.

Validation Data

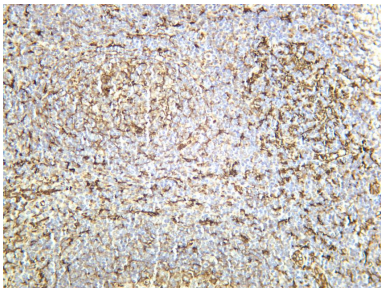


Various whole cell lysates were separated by 4-20% SDS-PAGE, and the membrane was blotted with anti-Fascin antibody. The HRP-conjugated Goat anti-Rabbit IgG (H + L) antibody was used to detect the antibody.

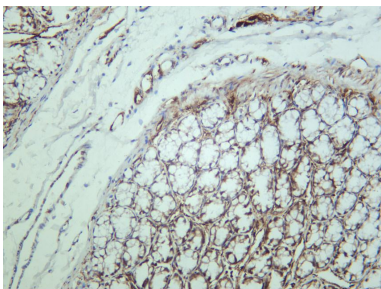
Lane 1: K562

Predicted band size: 55kDa

Observed band size: 55kDa



Human tonsil was stained with anti-Fascin rabbit antibody



Rat colon was stained with anti-Fascin rabbit antibody

For Research Use Only