

# DDDDK-Tag (binds to flag sequence) Rabbit mAb (AR1334)

## Key Features

Host Species:	Rabbit
Reactivity:	Species independent
Applications:	WB,IF,IP,ELISA
Isotype:	IgG,Kappa
MW:	VH IgG1 and VL Kappa

## Recommended Dilution Ratios

WB:	1:1000-5000
IF:	1:100-300
ELISA:	1:20000-50000
IP:	1:50-200

## Storage

-15°C to -25°C/1 year (Do not lower than -25°C)

## Basic Information

Clonality	Monoclonal
-----------	------------

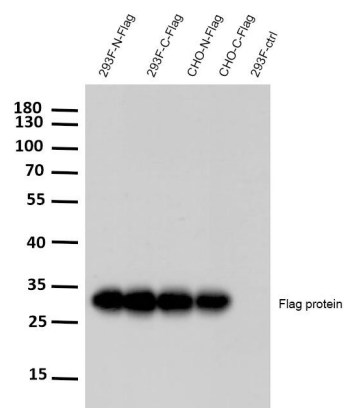
## Immunogen Information

Specificity	The antibody detects C-terminal, internal, and N-terminal Flag-tag fusion proteins.
-------------	---

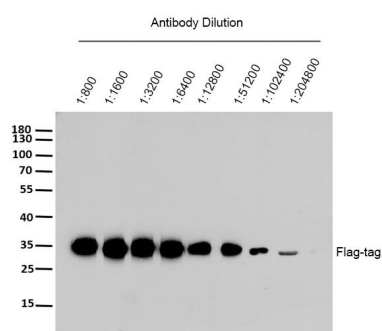
## Target Information

Gene name	Flag tag; Flag-tag, DDDDK TAG, DDDDK-TAG, DYKDDDDK tag, DYKDDDDK-tag
-----------	--

## Validation Data



Western Blot analysis of 293F and CHO cells transfected or non-transfected DDDK-tag expression vector by primary antibody at 1:3000 dilution.



Western Blot analysis of flag-tag protein using primary antibody at various dilution. Secondary antibody was diluted at 1:10000

For Research Use Only