

Glut1 Rabbit mAb (AR1335)

Key Features

Host Species:	Rabbit
Reactivity:	Human, Mouse, Rat
Applications:	WB, IHC, IF, IP, ELISA
Isotype:	IgG, Kappa
MW:	54kD (Calculated) 50-300kD (Observed)

Recommended Dilution Ratios

IHC:	1:1000-5000
WB:	1:10000-50000
IF:	1:200-1000
ELISA:	1:5000-20000
IP:	1:50-200

Storage

-15°C to -25°C/1 year (Do not lower than -25°C)

Basic Information

Clonality	Monoclonal
-----------	------------

Immunogen Information

Specificity	Endogenous
-------------	------------

Target Information

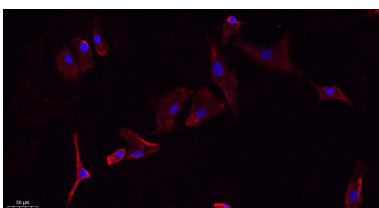
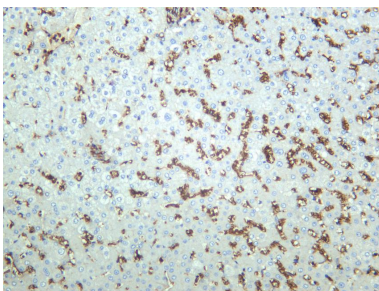
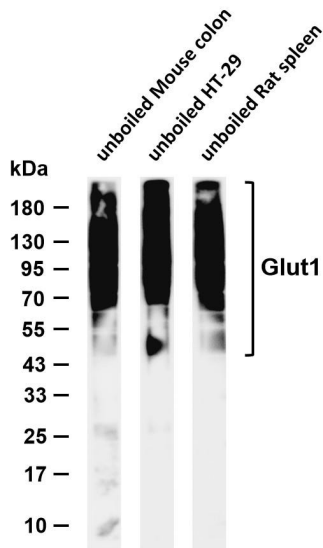
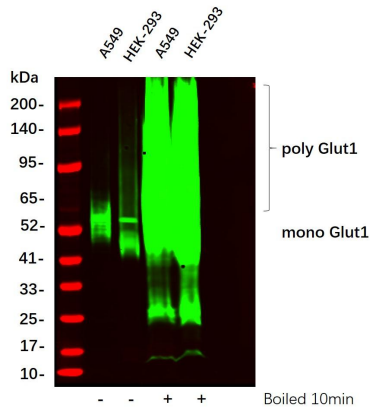
Gene name	SLC2A1
Protein Name	Solute carrier family 2 facilitated glucose transporter member 1

Organism	Gene ID	UniProt ID
Human	6513	P11166
Mouse	20525	P17809
Rat	24778	P11167

Cellular Localization	Cell membrane; Multi-pass membrane protein. Melanosome. Photoreceptor inner segment. Localizes primarily at the cell surface (PubMed:18245775, PubMed:19449892, PubMed:23219802, PubMed:25982116, PubMed:24847886). Identified by mass
-----------------------	--

Tissue specificity

Validation Data



spectrometry in melanosome fractions from stage I to stage IV (PubMed:17081065). .

Detected in erythrocytes (at protein level). Expressed at variable levels in many human tissues.

Western Blot analysis using various cell lysate, Proteins were separated by 4-20% SDS-PAGE, and the membrane was blotted with Glut1 Rabbit mAb diluted at 1:2000. Secondary: Dylight 800, Goat Anti Rabbit IgG(1:10000)

Various whole cell lysates were separated by 4-20% SDS-PAGE, and the membrane was blotted with anti-Glut1 antibody. The HRP-conjugated Goat anti-Rabbit IgG (H + L) antibody was used to detect the antibody.

Lane 1: unboiled Mouse colon

Lane 2: unboiled HT-29

Lane 3: unboiled Rat spleen

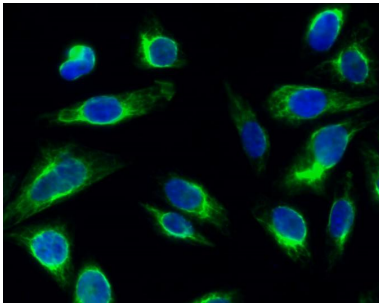
Predicted band size: 54kDa

Observed band size: 50-300kDa

Human tonsil was stained with anti-Glut1 rabbit antibody

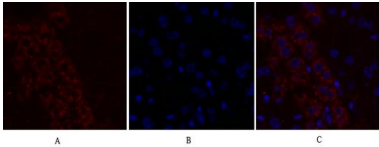
Immunofluorescence analysis of A549.

1. Primary Antibody(red) was diluted t 1:200(4°C overnight).
2. Goat Anti Rabbit IgG (H&L) - Alexa Fluor 594 econdary antibody was diluted at 1:1000(room temperature, 50min).
3. DAPI (blue) 10min.



Immunofluorescence analysis of Hela cell.

1. Glut1 Monoclonal Antibody(green) was diluted at 1:200(4 ° overnight).
2. Goat Anti Rabbit AlexaFluor 488 was diluted at 1:1000(room temperature, 50min).
3. DAPI (blue) 10min.



Immunofluorescence analysis of mouse-liver tissue.

1. Glut1 Monoclonal Antibody(red) was diluted at 1:200(4 ° C, overnight).
2. Cy3 labeled Secondary antibody was diluted at 1:300(room temperature, 50min).
3. DAPI (blue) 10min.

Picture A: Target. Picture B: DAPI. Picture C: merge of A+B

For Research Use Only